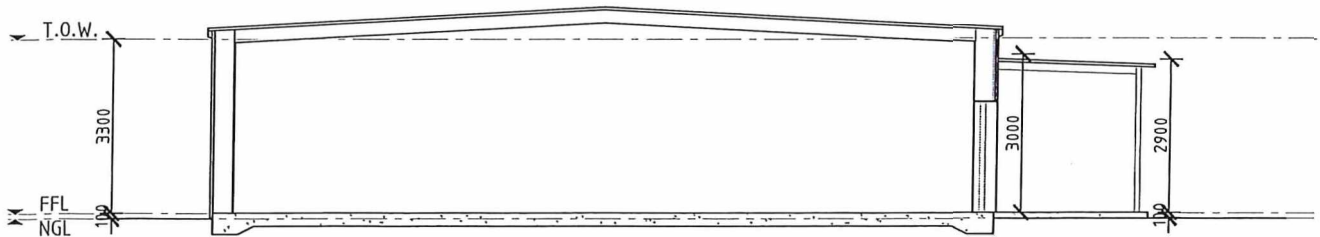
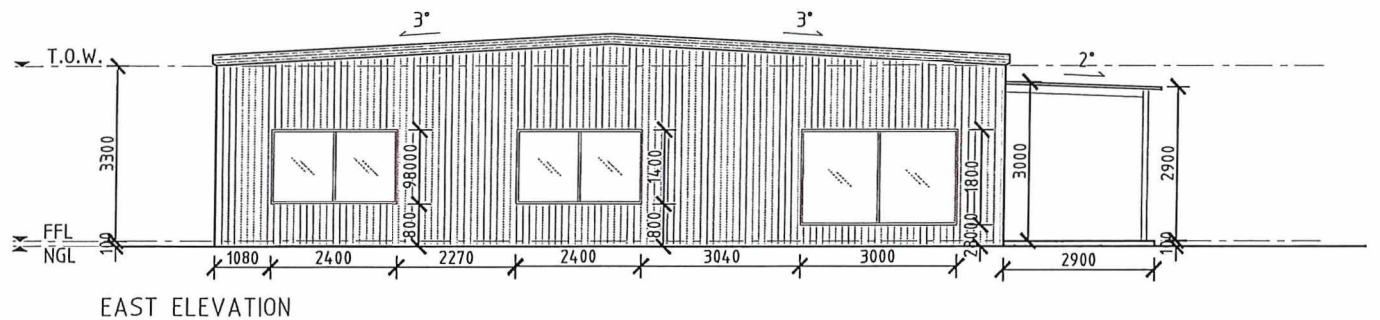
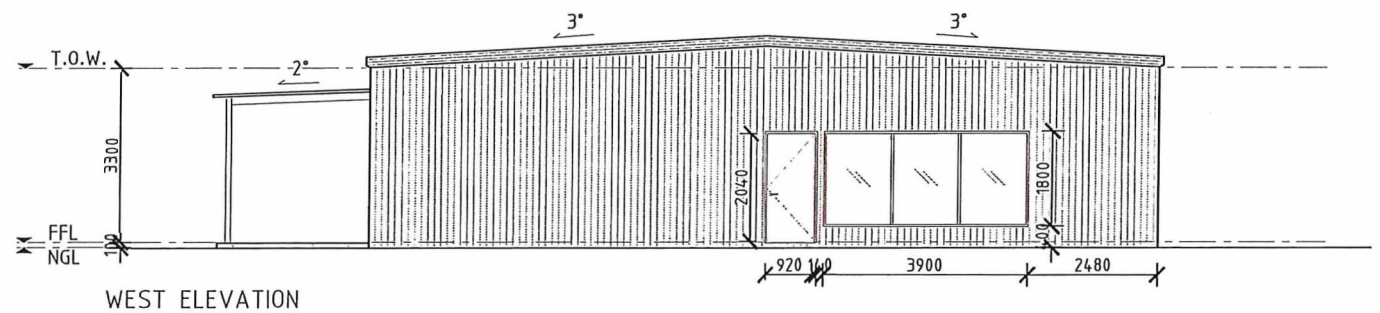
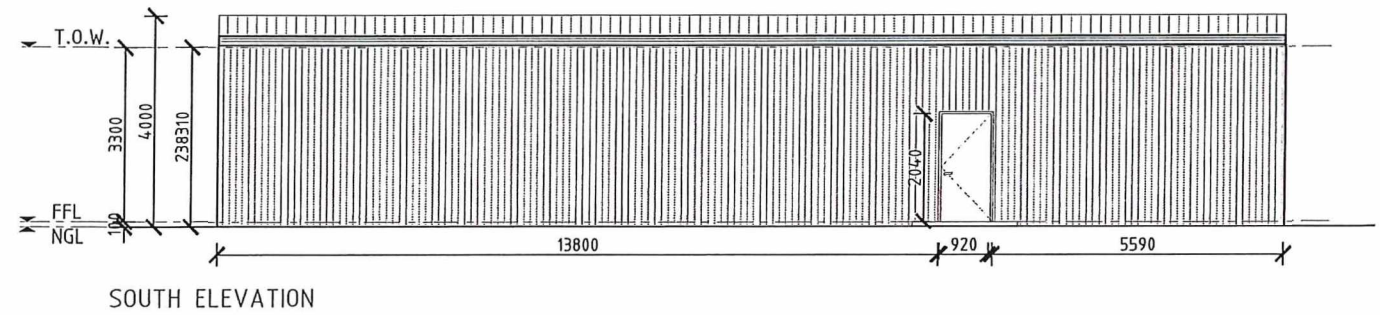
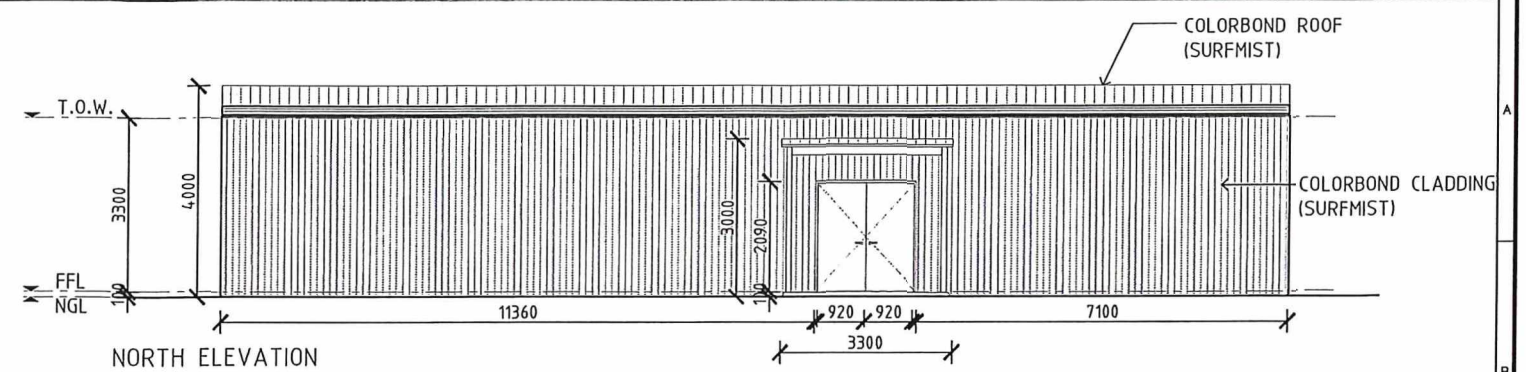
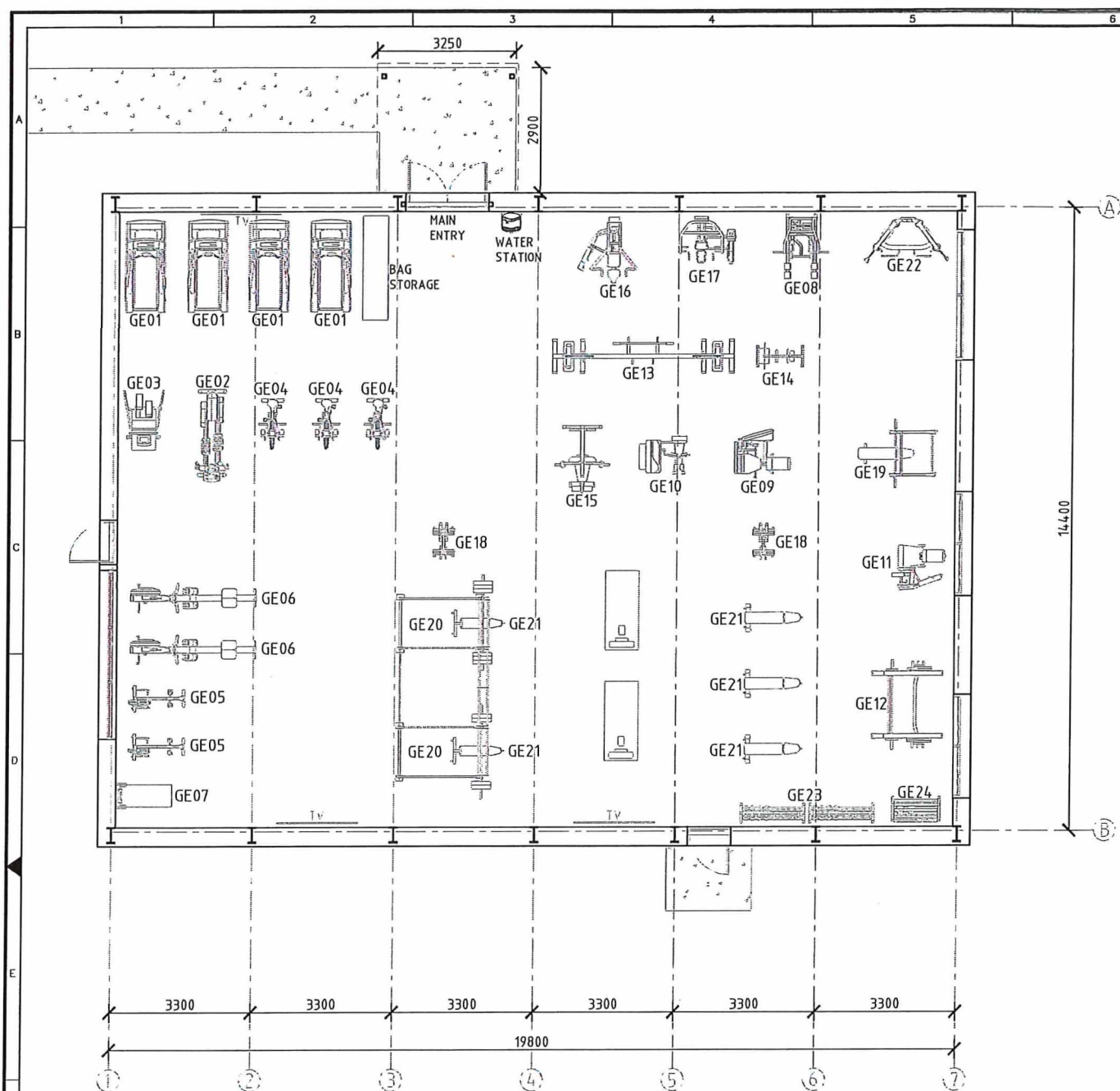


<p>This drawing and all the information thereon remains the property of Iuka Resources Limited and shall be returned on demand. It is issued on the condition that, except with written permission, it must not be reproduced, copied or communicated to any other party, nor to be used for any other purpose than that stated on the particular enquiry, order, or contract with which it was issued. Acceptance of this drawing signifies acceptance of the above conditions and copyright.</p>									
DRAWING No.		TITLE		ISSUED FOR USE		BY		DATE	
2		REFERENCE DRAWINGS		No.		LY		15.07.25	
3		DRAWING REVISIONS		DESCRIPTION		CHK		15.07.25	
4						APP		15.07.25	
5									
6									
7									
8									
9									
10									
11									
12									

SIGNED APPROVAL	
ENG	15.07.25
DRN	15.07.25
CHK	15.07.25
APP	15.07.25



CATABY RD, CATABY, WA				
ILUKA VILLAGE				
CENTRAL FACILITIES EXPANSION				
OVERALL SITE PLAN				
SCALE	FUNCTIONAL LOCATION	DISC CODE	DRAWING NUMBER	REVISION
1:200		A	A001	A



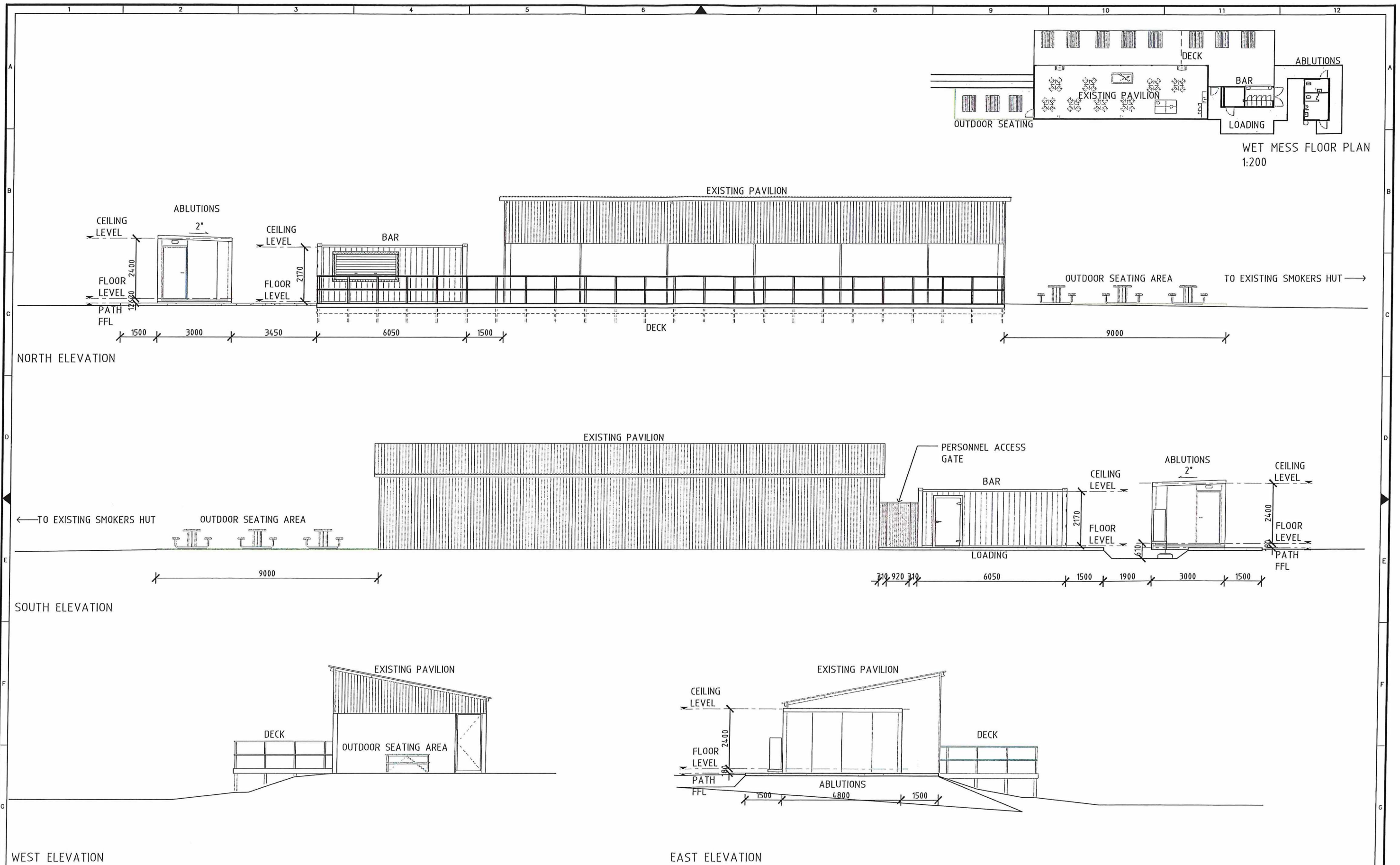
This drawing and all the information thereon remains the property of Iuka Resources Limited and shall be returned on demand. It is issued on the condition that, except with written permission, it must not be reproduced, copied or communicated to any other party, nor to be used for any other purpose than that stated on the particular enquiry, order, or contract with which it was issued. Acceptance of this drawing signifies acceptance of the above conditions and copyright.

DRAWING No.	TITLE	DESCRIPTION	BY	DATE	CHK	DATE	APP	DATE
A	ISSUED FOR USE		LY	15.07.25	BL	15.07.25	KP	15.07.25

SIGNED APPROVAL	
ENG	15.07.25
DRN	15.07.25
CHK	15.07.25
APP	15.07.25



CATABY RD, CATABY, WA			
ILUKA VILLAGE			
CENTRAL FACILITIES EXPANSION			
GYMNASIUM FLOOR PLAN & ELEVATIONS			
SCALE	FUNCTIONAL LOCATION	DISC CODE	DRAWING NUMBER
1:70		A	A102
			REVISION
			A



<p>This drawing and all the information thereon remains the property of Iuka Resources Limited and shall be returned on demand. It is issued on the condition that, except with written permission, it must not be reproduced, copied or communicated to any other party, nor to be used for any other purpose than that stated on the particular enquiry, order, or contract with which it was issued. Acceptance of this drawing signifies acceptance of the above conditions and copyright.</p>										DRAWING No.										TITLE										No.										DESCRIPTION										A										ISSUED FOR USE										LY										15.07.25										BL										15.07.25										KP										15.07.25										APP										DATE																																																																																																																																																																																																																																																																																																																																																																																																																																																																																																																																																																																																																																																																																																																																																																																																																																																																																																																																																																																																																																																																																																																																																																																																																																																																																																																																																																																																																																																																																																																																																																																																																																																																																																																																																																																																																																																																																																																																																																																																																																																																																																																																																																																																																																																																																																																																																																																																																																																																																																																																																																																																																																																																																																																																																																																																																																																																																																																																																																																																																																																																																																																																																																																																																																																																																																																																																																																																																																																																																																																																																																																																																																																																																																																																																																																																																																																																																																																																																																																																																																																																																																																																																																																																																																																																																																																																																																																																																																																																																																																																																																																																																																																																																																																																																																																																																																																																																																																																																																																																																																																																																																																																																																																																																																																																																																																																																																																																																																																																																																																																																																																																																																																																																																																																																																																																																																																																																																																									