

Coastal Recreational Track Management Master Plan for the Shires of Coorow, Dandaragan & Gingin

Site Assessment Tables

March 2025 REV-B



natural resource
management program



Table Of Contents

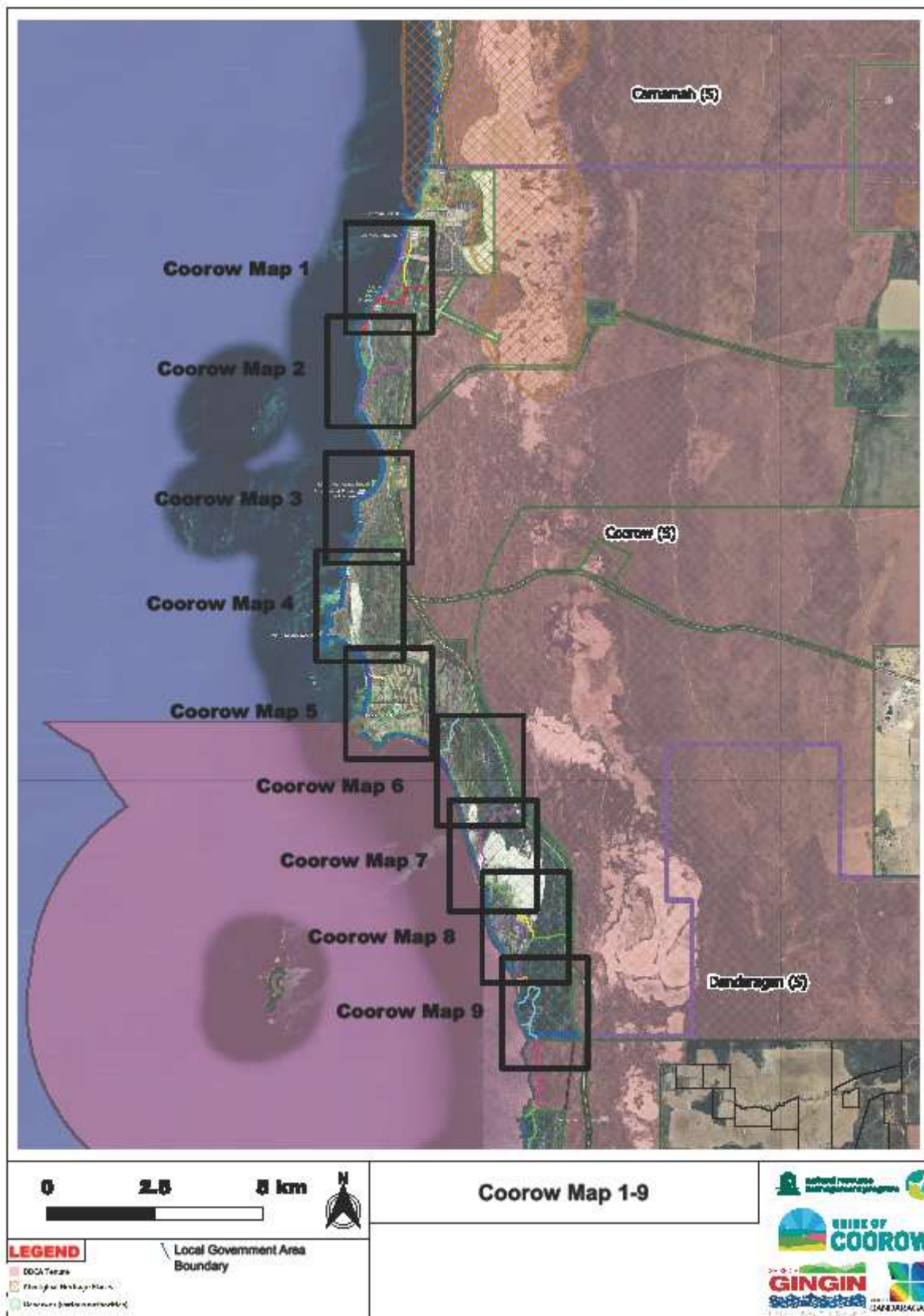
Locations List and Map by Local Government Authority.....	3
Shire of Coorow	3
Shire of Dandaragan	5
Shire of Gingin.....	7
Site Assessments by Local Government Authority.	9
Shire of Coorow Site Assessments.....	9
Leeman South Limestone shelf and beaches (CW01).....	9
Webb Island area (CW02)	11
Little Anchorage Bay (CW03)	12
Lipfert Island area. (CW04)	13
Billy Goat Bay (Milligan Island area) (CW05)	14
Harrop Inlet (CW06).....	16
Pont Louise (CW07).....	18
Anchorage Bay (CW08)	19
South Bay (CW09)	21
Shire of Dandaragan Site Assessments.....	24
Griswald Bay (DN01)	24
Sandy Cape (DN02)	26
Kiny Bay (DN03).....	30
Volcano (DN04).....	31
North Head (DN05)	32
Pumpkin Hollow (DN06).....	35
Jurien Bay town beaches (DN07)	37
Booka Valley. (DN08)	40
Hill River (DN09).....	43
Deflation Basin (DN10).....	47
Black Point (DN11)	48
Cervantes town beaches (DN12)	50
Hansen Bay (DN13)	52
Shire of Gingin Site Assessments	54
Lancelin to Nilgen Nature Reserve Boundary. (GG01).....	54
Lancelin Back Beach (GG02).....	57
Fence Reef to Lancelin (GG03).....	59
Ledge Point to Fence Reef (GG04)	61

Manakoora Sand Patch to Ledge Point (GG05)	63
Breton Bay to Manakoora Sand Patch (GG06).....	66
Mission Beach/Eagles Nest Bluff to Breton Bay (GG07)	69
Seabird to Mission Beach/Eagles Nest Bluff (GG08).....	73
Guilderton to Seabird (GG09)	78
Wilbinga to Moore River mouth (GG10).....	82

Locations List and Map by Local Government Authority.

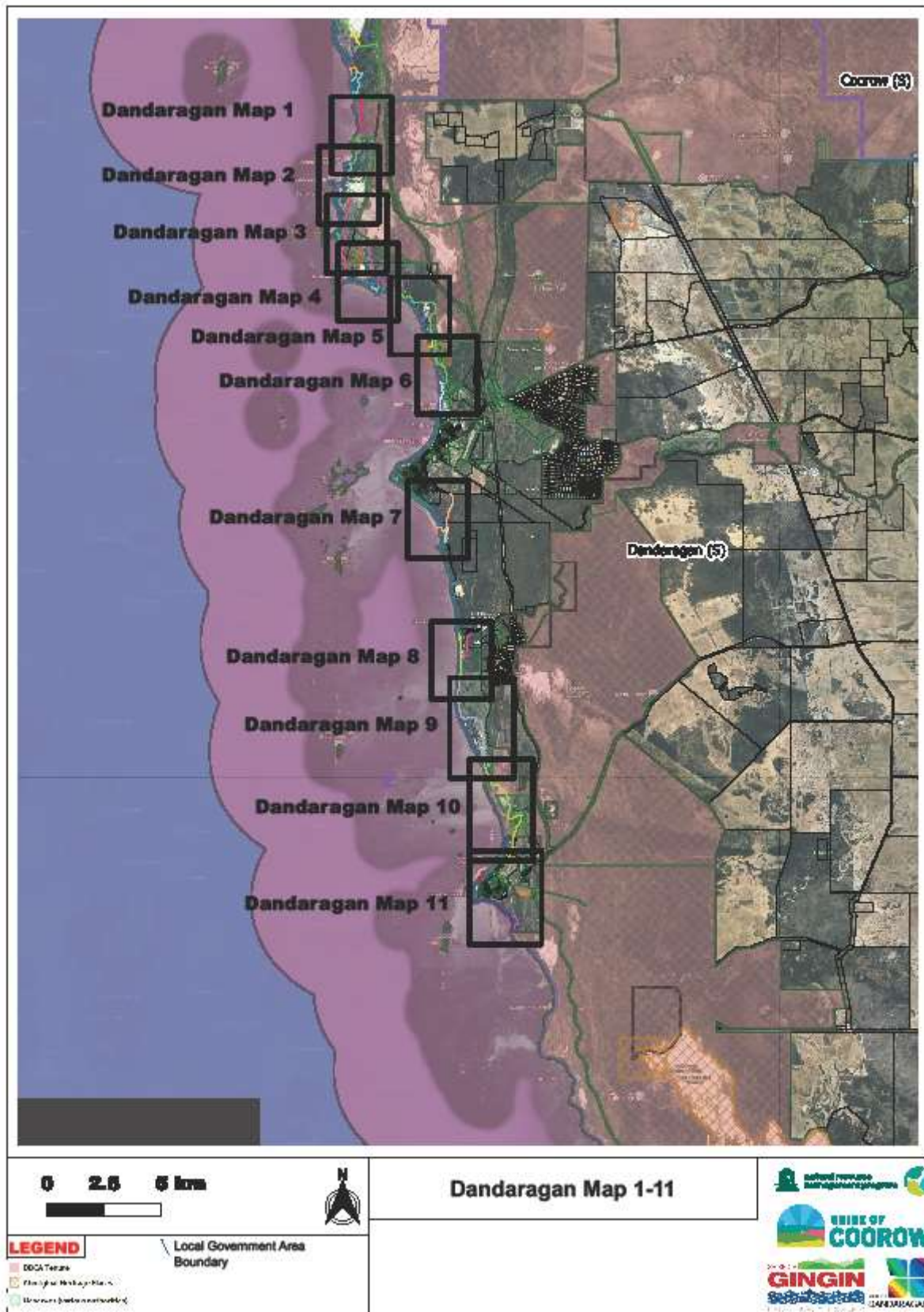
Shire of Coorow

Leeman South Limestone shelf and beaches (CW01)	Map 1
Webb Island area (CW02)	Map 2
Little Anchorage Bay (CW03)	Map 3
Lipfert Island area. (CW04)	Map 3
Billy Goat Bay (Milligan Island area) (CW05)	Map 4
Harrop Inlet (CW06)	Map 4
Pont Louise (CW07)	Map 4
Anchorage Bay (CW08)	Map 4, 5
South Bay (CW09)	Map 6, 7, 8, 9



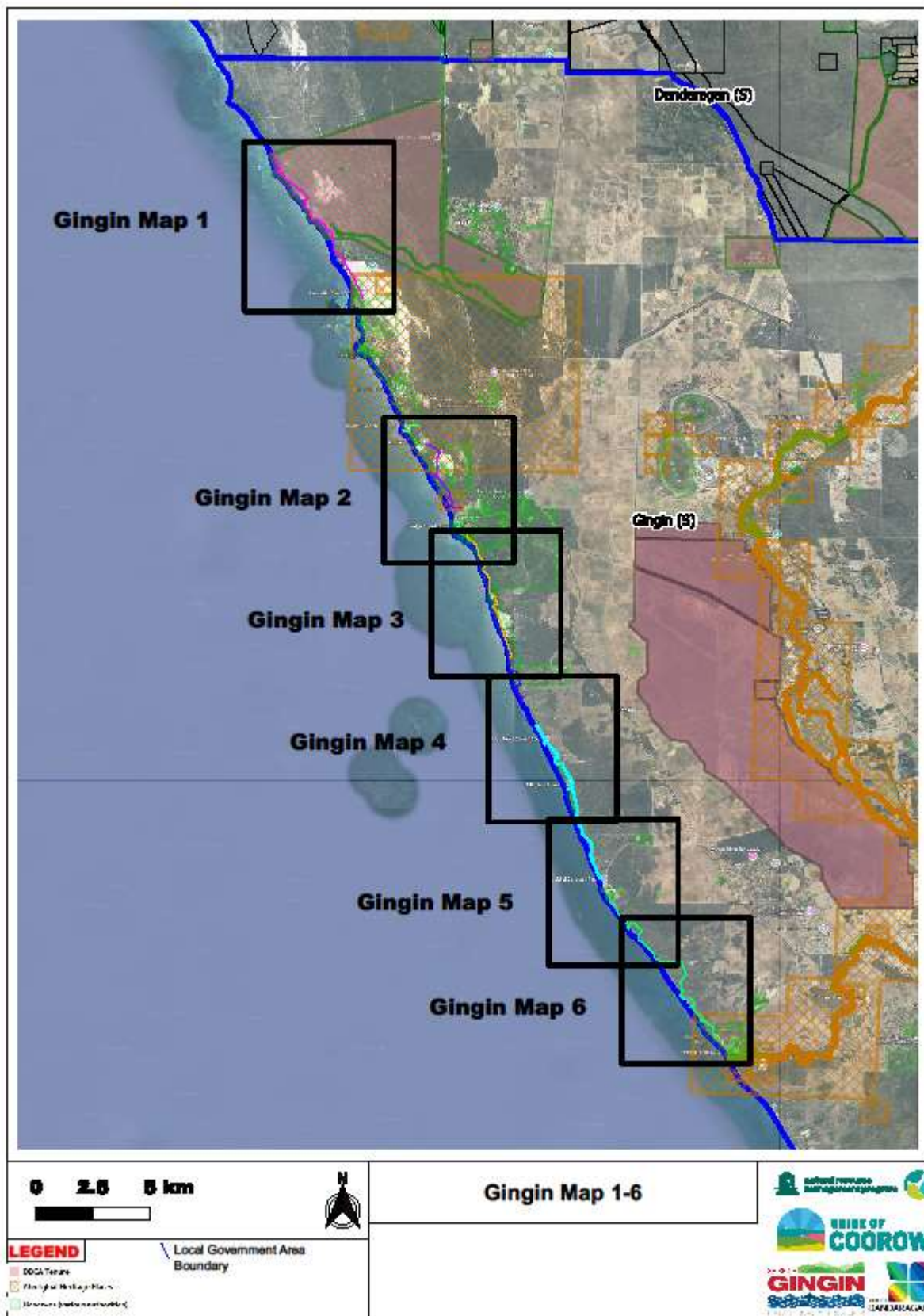
Shire of Dandaragan

Griswald Bay (DN01)	Map 1
Sandy Cape (DN02)	Map 1, 2
Kingy Bay (DN03)	Map 2-3
Volcano (DN04)	Map 3-4
North Head (DN05)	Map 3, 4
Pumpkin Hollow (DN06)	Map 4, 5. 6
Jurien Bay town beaches (DN07)	
Booka Valley. (DN08)	Map 7
Hill River (DN09)	Map 8
Deflation Basin (DN10)	Map 9
Black Point (DN11)	Map 10
Cervantes town beaches (DN12)	Map 11
Hansen Bay (DN13)	Map 11



Shire of Gingin

Lancelin to Nilgen Nature Reserve Boundary. (GG01)	Map 1
Lancelin Back Beach (GG02)	Map 2
Fence Reef to Lancelin (GG03)	Map 2
Ledge Point to Fence Reef (GG04)	Map 2
Manakoora Sand Patch to Ledge Point (GG05)	Map 3
Breton Bay to Manakoora Sand Patch (GG06)	Map 3, 4
Mission Beach/Eagles Nest Bluff to Breton Bay (GG07)	Map 4, 5
Seabird to Mission Beach/Eagles Nest Bluff (GG08)	Map 4, 5
Guilderton to Seabird (GG09)	Map 5, 6
Wilbinga to Moore River mouth (GG10)	



Site Assessments by Local Government Authority.

Shire of Coorow Site Assessments

Site Assessment

Leeman South Limestone shelf and beaches (CW01)

Location **-29.960341° 114.972013°**



Limestone Headland South of Leeman with rock barricading moved by track users



Looking North toward Leeman from Webb Island Area. Mostly single track with some stopping areas showing user generated track growth.

Description	Low limestone shelf and small beaches protected by reef structure. Low fore dune with minimal dune cover over limestone base.
Access	Coastal track from IOD and South end of Leeman town site.
Attractions and features	Popular area for fishing from coastal shelf. Also used for ocean viewing and picnicking.
Recreational use suitability assessment	Low use area due to limited area between dune systems and limestone shelf edge. Limited vehicle access onto beaches in this area.
Development potential	Low due to limited area between dune system and limestone shelf at coastal edge.
Recommendation	<p>Site Protection (SP): Close off duplicate tracks and coast entry points. Rehabilitate and revegetate closed tracks and entry points.</p> <p>Site Development (SD): Install educational signage on use of the area. Cut through old inland track for southern access. Close and rehabilitate coastal dune crest track to Webb Island.</p>

Site Assessment

Webb Island area (CW02)

Location -29.975699° 114.963252°



Looking North toward Webb Island showing local tracks

Description	Limestone headland main feature of the area. To the South steep fore dune into ocean with vehicle track on top. To the North a small embayment leading into low limestone bench and cliff.
Access	Access is by coastal tracks from IOD. Southern track runs along top of very steep and high foredune. North track cuts through a heavily eroded dune that access had been restricted to previously.
Attractions and features	Prominent limestone head land that is popular for fishing and ocean views. Small embayment with sandy beach for swimming is located nearby on the Northern edge.
Recreational use suitability assessment	Medium due to the cliff risk and limited beach access in the area. Track on top of fore dune is a risk of creating a mobile dune system with degradation of vegetation on dune ridge top.
Development potential	Low. Dune system is not suitable for high rate of vehicle traffic use of the coastal track as surface is not durable and subject to erosion. An old inland track in the southern section should be designated as the Southern access for the area. Northern access follows the coast on a lower dune system with limestone shelves. Duplicate track and coast entry point s need to be closed off.
Recommendation	Site Protection (SP): Move Southern access track to old inland track and away from crest of foredune. Reinstate bollards to stop access through eroding dune on North access track. Site Development (SD): Develop old inland track on south access to area. Close foredune ridge top track and rehabilitate and revegetate. Reinstate bollards in eroded dune and educational signage install on access changes.

Site Assessment

Little Anchorage Bay (CW03)

Location -30.013423° 114.966777°



Little Anchorage Bay looking South from mid-point of bay

Description	Long embayment with narrow beach. Limestone head land at Southern and Northern ends. Very low coastal dune and vegetation on Southern end subject to storm surge inundation.
Access	Southern end by gravel road. Northern end by coastal tracks
Attractions and features	Ocen views, sections of sandy beach with shallow waters.
Recreational use suitability assessment	Medium due to narrow beach and low foredune subject to storm inundation. Shallow waters of the bay make it family friendly for swimming. Seaweed build up can significantly reduce the useability of the beaches and bay especially after a storm front.
Development potential	Low. Due to narrow beach and low coastal dune being subject to frequent storm surge inundation.
Recommendation	Site Protection (SP): Delineate pedestrian and vehicle movements. Rehabilitation and revegetate high risk storm surge areas to build resilience to storm damage. Site Development (SD): Low development potential due to very low foredune being breached by storm surges. Educational signage on use of the area. Delineate pedestrian and vehicle use area. Reduce the number of vehicle access points to 2.

Site Assessment

Lipfert Island area. (CW04)

Location -30.024375° 114.962284°



Looking South from Lipfert Island

Description	Open section of coastline near Lipfert Island. Southern end has a low limestone headland. Northern end has a low limestone point. Long section of very narrow sandy beach. Southern ends is backed by very low dune structure while the Northern end has a moderately high dune structure.
Access	Access is via gravel formed road with coastal tracks to the beach. The road is set quite close to the coast in this section.
Attractions and features	Long sandy beach. Low coastal dune making easy access at Southern end. Small dune near Northern end. Ocean views out to Lipfert Island.
Recreational use suitability assessment	Medium. Mostly due to Narrow beach along most of the section of coast. Southern end has wider beach section and more suited to recreational use for swimming and fishing with shelter behind headland.
Development potential	Low due to narrow beach and the access road being very close to the coast in this section. With very low dunes in this area it is subject to storm surges and subsequent damage to vegetation and man made structures.
Recommendation	Site Protection (SP): Rehabilitate and revegetate tracks in Southern end of Lipfert Island area. Site Development (SD): Education signage on area use. Delineate vehicle and pedestrian use areas. Protect landscape and vegetation from storm surge degradation.

Site Assessment

Billy Goat Bay (Milligan Island area) (CW05)

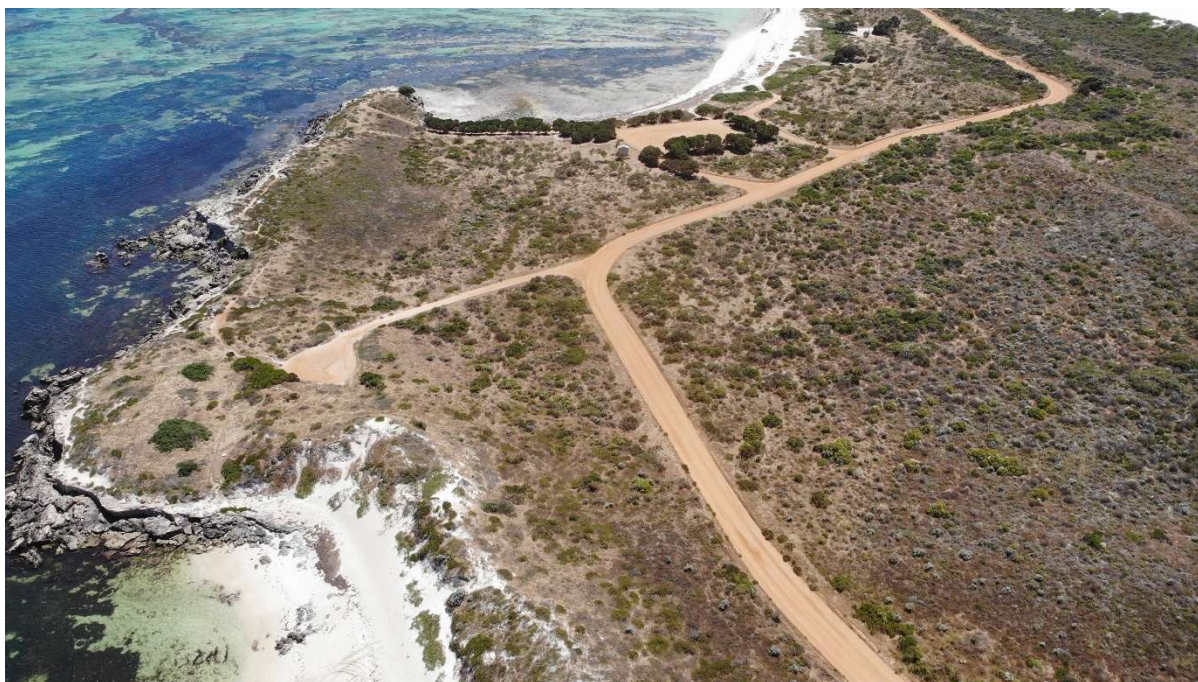
Location **-30.038772° 114.959665°**



Billy Goat Bay showing multiple track growth at entry



Billy Goat Bay area showing low beach dune profile offering little protection to coastline from super tides and storm surges.



Billy Goat Bay and Harrop Inlet. Pedestrian damage on dunes at Harrop Inlet

Description	Long embayment with low coastal dune. Small low limestone headland at Southern end.
Access	Formed gravel road and short coastal track to beach. Multiple beach entry points.
Attractions and features	Reef protected bay with sand beaches. Milligan Island is located very close offshore. Swimming and fishing are popular. Milligan Island campground is located near the Northern end.
Recreational use suitability assessment	High. Currently major recreational use area with carpark at South end with toilet block. Campground located near Northern end. Maintain current facilities.
Development potential	Maintain current facilities. Consolidate entry points to have one near each end of bay to reduce coastal erosion and storm surge damage.
Recommendation	<p>Site Protection (SP): Rehabilitate and revegetate multiple beach access tracks along bay. Leave access points near Northern and Southern end only. Restrict vehicle access to Southern end headland, make this pedestrian access only. Make site resilient to storm surge movements to protect landscape and vegetation.</p> <p>Site Development (SD): Maintain site facilities. Delineate pedestrians and vehicle use areas. Educational signage on areas of use.</p>

Site Assessment

Harrop Inlet (CW06)

Location **-30.044773° 114.956800°**



Harrop inlet showing seaweed build up. Steep entry to beach subject to erosion.



Harrop Inlet. Beach has been used by hooners leaving skid marks along the entire beach.

Description	Very small embayment with limestone headlands at each end.
Access	4WD track at south end. Access subject to seaweed build up and tidal movements. Foot traffic down dunes at North end causing erosion. Vehicle Hoon activity on beach.
Attractions and features	Small partly sheltered bay. Good fishing and swimming beach.
Recreational use suitability assessment	Medium due to the variability of steep access to beach by foot or 4WD vehicle. Beach has very limited capacity due to narrow beach backed by steep coastal dune.
Development potential	Low. Due to the small size of the inlet, it cannot sustain a high level of human use. Excessive use will lead to loss of vegetation in surrounding dunes leading to accelerated erosion forces.
Recommendation	<p>Site Protection (SP): rehabilitate and revegetate high erosion risk pedestrian tracks.</p> <p>Site Development (SD): Install education signage at both ends of the inlet. Delineate areas of use. Consider closing public vehicle access at South end.</p>

Site Assessment

Pont Louise (CW07)

Location -30.049190° 114.955501°



Point Louise overview

Description	Limestone headland
Access	Formed road/track with wayfinding signage
Attractions and features	Outlook over ocean and coastline from elevated position.
Recreational use suitability assessment	High due to durable surface and formed dirt road/track. Risk of fall from limestone cliff face and falling objects near base of cliff.
Development potential	Maintain. Popular location for local and visitors for views and fishing.
Recommendation	Site Protection (SP): Install educational signage. Exclude foot traffic from fragile vegetation areas and high risk areas. Site Development (SD): Install educational signage. Delineate areas of use.

Site Assessment

Anchorage Bay (CW08)

Location **-30.053238° 114.964238°**



Anchorage Bay beach showing storm surge and super tide impact on beach profile



Anchorage Bay Northern end showing seaweed build up and impact on beach track movement



Anchorage Bay Southern end showing multiple track growth to drive around seaweed build ups.

Description	Smaller embayment between limestone headlands. High energy coastline. Narrow sections of beach at high tide and winter. Beach subject to seaweed build up after storms.
Access	Formed track at each end
Attractions and features	Close to Green Head town site. Swimming, fishing and 4WD access to the beaches and bays North of Green Head
Recreational use suitability assessment	High due to its close proximity to Green Head town. Beach can build up with seaweed after storms. Sand benches develop in winter.
Development potential	Maintain. Popular beach used by locals and visitors to 4WD to point Louise.
Recommendation	<p>Site Protection (SP): South end of beach access to be consolidated to two main entry points. Rehabilitate and revegetate other tracks.</p> <p>Site Development (SD): Install educational signage on beach use and tracks. Separate pedestrians from vehicles users for amenity and safety.</p>

Site Assessment

South Bay (CW09)

Location **-30.072650° 114.976589°**



South Bay Northern end looking back around bay. Seaweed build up moves beach entry point south eastward. South bay has a very narrow beach backed by high steep dunes leaving a narrow beach to drive on.



South Bay midpoint looking North. Limited tracks from here to Green Head. Driving on the beach to Green Head can be difficult with high tides, storm surges and seaweed build up.



Inland tracks from South Bay midpoint. Mining lease dunes are used by 4WD's even though it is signed as a no entry area. Access track to IOD is partly blocked by an earth bund which is driven over by 4WD users. Tracks to the South join to Sandy Cape tracks through DBCA reserve.



Southern end of South Bay looking North. Tracks in this area appear to be stable with little track growth evident. However considerable items of rubbish are often left in this area.

Description	Long sweeping bay with limestone headland at Northern end. High energy coastline
Access	Southeast end of Green Head townsite by road and beach from South when passable. Seaweed build up can restrict beach access.

Attractions and features	Sandy beach popular with fisherman and swimmers. Very narrow beach subject to sand benches and weed build up making it a challenging beach to drive. Tides also make for dangerous driving conditions near high tide.
Recreational use suitability assessment	Beach suitable for swimming and fishing. Suitable for experienced 4WD users with very good judgement and risk management.
Development potential	Limited due to the narrow beach backed by steep dunes with scattered vegetation coverage.
Recommendation	<p>Site Protection (SP): Educational signage on potential dangers of driving on the beach. Beach entry point at North end rehabilitated and revegetated.</p> <p>Site Development (SD): Minimal development recommended for the site. High risk beach for 4WD due to narrow beach backed by steep dune system. Beach subject to significant seaweed build up during storms. Beach can develop sand benches making it dangerous to drive 4WD's on the beach. Separate pedestrians and vehicles to maintain amenity and safety.</p>

Shire of Dandaragan Site Assessments

Site Assessment

Griswald Bay (DN01)

Location -30.174595° 115.001351°



Griswald Bay look South the Sandy Cape. Unrestricted camping access to area has allowed growth in area used for camping. This has also caused a growth in vehicle and pedestrian tracks in the area.



Griswald Bay looking North. Camping area and track growth can be seen across the area.

Description	Small sheltered bay with limestone cliff headland at each end
Access	4WD coastal track leading north from sandy cape campground

Attractions and features	Sheltered beach with coastal reef near headland. Excellent views across bay.
Recreational use suitability assessment	Fishing, swimming, camping and 4WD driving. Reasonably sheltered from wind erosion. Limestone base with sand cover in areas
Development potential	Self sufficient Eco camping site. Suitable for day use in limited numbers.
Recommendation	<p>Site Protection (SP): Limit camping sites to durable surfaces and low risk erosion areas. Sign post a delineate areas of use.</p> <p>Site Development (SD): Delineate suitable campsites and parking areas. Signage detailing site usage requirements. Coastal Plan for Coastal Development 1999 suggests 20 camping pods and picnic area (Page 83-84).</p>

Site Assessment

Sandy Cape (DN02)

Location **-30.184243° 114.997870°**



High energy wind erosion path on Sandy Cape. Vehicle and pedestrian use has prevented natural reestablishment of vegetation.



High energy wind erosion path on Sandy Cape. Looking directly into prevailing wind direction. Vehicle and pedestrian use has prevented natural reestablishment of vegetation.



Sandy Cape showing extent of sand movement in the area as a result of dune vegetation being damaged by vehicles and pedestrians



Sandy Cape Campground showing damage to coastal dune system caused by uncontrolled beach access.



Sandy Cape Campground North end showing damaged to coastal dune system caused by uncontrolled pedestrian beach access.

Description	Significant destination for visitors to the North Head Sandy Cape reserve. Rocky headland with sandy beaches either side. Popular 4WD destination. Sandy Cape Campground is located adjoining the Sandy Cape Headland and is very popular destination for visitors from Perth, intrastate, interstate and internationally. Significant erosion of the landscape has occurred along with habitat and vegetation loss.
Access	Via Sandy Cape road and also along beaches with a 4WD drive subject to beach conditions.
Attractions and features	Campground, good swimming beaches, sand dunes for sand boarding, fishing, 4WD driving. Outlook from Sandy Cape headland.
Recreational use suitability assessment	Water based attractions are excellent and suited to visitor use during favourable conditions. Day use area. Camping in the area is allowed. Pedestrian access needs to be controlled due to significant environmental damage. Limit pedestrian access to designated areas and trails. Vehicle access restricted to designated tracks and the beach to defined points. There are limestone cliffs in the area that can be hazardous to visitors if they are not aware of the risks.
Development potential	High. Implement a structured management plan to effectively manage visitor numbers and the visitor experience. Clearly delineate areas of use. Implement online booking system to control overflow camping at site.
Recommendation	<p>Site Protection (SP): Restrict access to clearly defined areas, tracks and paths. Separate vehicle and pedestrian movements. Use educational signage to define the details of use of the area. Brushing should be installed on all major wind erosion areas.</p> <p>Site Development (SD): Set up as nature based camping, swimming, fishing area. Delineate car park, caravan parking areas and access ways to Sandy Cape headland. Rehabilitate closed tracks and areas subject to high energy</p>

	erosion forces. Create loop walk trail to Sandy Cape proper, this may include wooden stairs and boardwalks to key lookout sites.
--	--

DRAFT

Site Assessment

Kingy Bay (DN03)

Location -30.201651° 114.997305°



Kingy Bay area showing track growth and multiplication. Coastal erosion and damage can be mitigated by a reduction in beach entry points and tracks.

Description	Open bay with high energy coastline. Beach width and angle subject to constantly changing conditions especially in winter. Low foreshore dunes. Dunes are moderately stable.
Access	4WD by coastal track or beach driving south from Sandy Cape
Attractions and features	Sandy beach with good views of the ocean. No coastal reef at the location. Fishing, snorkelling and diving.
Recreational use suitability assessment	Low impact camping and day use area. Swimming and fishing.
Development potential	Low key day use. Potential for 20 self sufficient eco camping pods. Coastal Plan for Coastal Development 1999 suggests 20 camping pods and picnic area (Page 88-89)
Recommendation	Site Protection (SP): Limit camping sites to durable surfaces and low risk erosion areas. Sign post a delineate areas of use. Rehabilitate and revegetation of areas not suitable for recreational use. Site Development (SD): Delineate suitable campsites and parking areas. Signage detailing site usage requirements. Coastal Plan for Coastal Development 1999 suggests 20 camping pods and picnic area (Page 88-89)

Site Assessment

Volcano (DN04)

Location -30.215019° 114.997635°



Volcano area showing track growth and multiplication. The area has had significant vegetation damage in the last 10 years because of increased use of the area. Historical satellite images clearly show changes in vegetation density in the area.

Description	Sandy beach situated between limestone headlands with a small dune backed by a limestone ledge.
Access	4WD by coastal track or beach driving south from Sandy Cape
Attractions and features	Sandy beach with sheltered camping below the limestone ledge.
Recreational use suitability assessment	Low impact camping and day use area. Swimming and fishing.
Development potential	Low key day use. Potential for 20 self sufficient eco camping pods. Coastal Plan for Coastal Development 1999 suggests 20 camping pods and picnic area (Page 91-93).
Recommendation	Site Protection (SP): Limit camping sites to durable surfaces and low risk erosion areas. Sign post a delineate areas of use. Rehabilitate and revegetation of areas not suitable for recreational use. Limit development to the base of the limestone ledge. Close off the top of the limestone ledge. Site Development (SD): Delineate suitable campsites and parking areas. Signage detailing site usage requirements. Coastal Plan for Coastal Development 1999 suggests 20 camping pods and picnic area (Page 91-93)

Site Assessment

North Head (DN05)

Location **-30.230453° 114.996416°**



North Head looking back North showing extensive track development beyond the no vehicles sign.



Overview of North Head looking back to the headland. Extensive erosion and track development can be seen on the headland.



North looking overview of North Head and RS48 historical site. Significant erosion and track development is making the entire area very unstable.



Noth Head narrow neck showing extent of erosion due to loss of vegetation. Bed rock is exposed in the right side of picture. It is estimated that approximately 100,000 tonnes of sand has been lost from this area in the last 50 years. Historical photos of the area were used to make this estimate of sand loss.

Description	Significant destination for visitors to the North Head Sandy Cape reserve. Site of old Radar Station 48 (RS48) and Coast Watch Station 16 (CW16). Rocky headland with sandy beaches either side. Popular 4WD destination and some camping in the area. Significant erosion of the land scape has occurred along with habitat and vegetation loss.
Access	Access is by 4WD track or beach drive in 4WD. Numerous 4WD tracks in the area. Duplicate tracks in area need to be closed and rehabilitated. Access is constrained by private property boundaries being close to the coast in this area.
Attractions and features	Historical Bunkers remains from RS48, view from headland, sandy beaches, swimming, fishing, 4WDing, Bartel memorial
Recreational use suitability assessment	Water based attractions are excellent and suited to visitor use during favourable conditions. Day use area. Camping in the area should not be allowed due to significant environmental damage. Limit to pedestrian access beyond a designated carpark area. Vehicle access restricted to designated track and the beach to defined points.
Development potential	Minimal due to significant environmental damage over the previous 50 years. Effective control of vehicles and pedestrians required at this site. Site requires rehabilitation to slow rate of deterioration of the site from overuse by vehicles and pedestrians. Private property boundaries constrain development at his site.
Recommendation	<p>Site Protection (SP): Redefine as day use area only. Restrict access to clearly defined areas, tracks and paths. Separate vehicle and pedestrian movements. Use educational signage to define the details of use of the area. Greater presence of rangers and use of CCTV, ANPR and AI to manage user behaviour.</p> <p>Site Development (SD): Set up as day use area catering for tourist visits to RS48 and CW16, swimming, fishing. Delineate car park area and access ways to North Head headland. Rehabilitate closed tracks and areas subject to high energy erosion forces. Create loop walk trail to North Head proper, this may include wooden stairs and boardwalks to 3 key lookout sites. The 3 lookout sites to look North at northern end, West at Bartel memorial and South at southern end. Access is constrained by private property boundaries being close to the coast in this area.</p>

Site Assessment

Pumpkin Hollow (DN06)

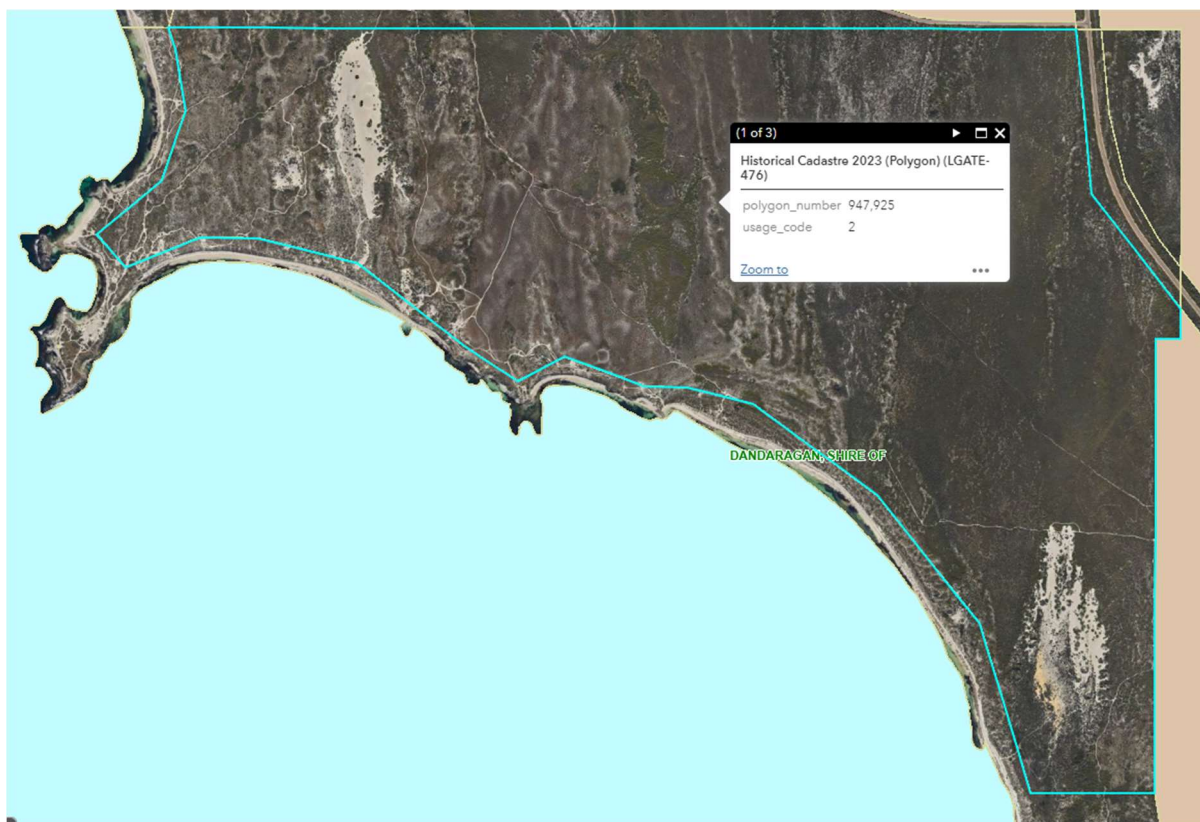
Location **-30.233917° 115.022095°**



Overview of Pumkin Hollow showing track duplication caused by sever wind and water erosion. The majority of tracks in this area are on private property.



Typical tracks in Pumpkin Hollow area. Majority of track in this area are on private property.



Private land holding limits around Pumpkin Hollow and North Head.

Description	Isolated beach on high energy coastline. Limestone headland on north west end of beach
Access	4WD by beach or coastal tracks through private property. Beach can become very short in winter months making beach driving very hazardous. Private property boundaries to the West, North and East constrain access to the site.
Attractions and features	Fishing, swimming, 4WD driving. Drone fishing off headland. Coastal reef near headland. Excellent vista from headland.
Recreational use suitability assessment	Fishing, swimming and 4WD driving. 4WD driving subject to access through private property. Cliff hazard at headland.
Development potential	Low. Access through private property and short narrow beaches in winter months restrict access to site.
Recommendation	<p>Site Protection (SP): Signage on low impact use of site. Monitor site use and change management strategy if use is impacting environment in the area.</p> <p>Site Development (SD): Maintain as a low key use area due to access issues. Define limit of reserve for users.</p>

Site Assessment

Jurien Bay town beaches (DN07)

Location **-30.311842° 115.025077°**



Looking South East from Shingle Ave access track. Good example of narrow winter beach backed by short steep dune.



Severe erosion at Shingle Ave access track after combined super tide and storm surge.



Overview of coastal tracks North of Jurien Bay. Multiple tracks in the lower section of picture are a result of seaweed build up North of the Jurien Bay Marina pushing beach access further along the beach to get past the seaweed deposits.



Overview of coastal tracks North of Jurien Bay. Multiple beach entry points need to be closed and one entry point past typical seaweed build point should be left open.



Looking South East from Island Point. Town beaches should be closed to vehicles to prevent vehicle and pedestrian interactions on popular swimming and fishing beaches within the town limits.

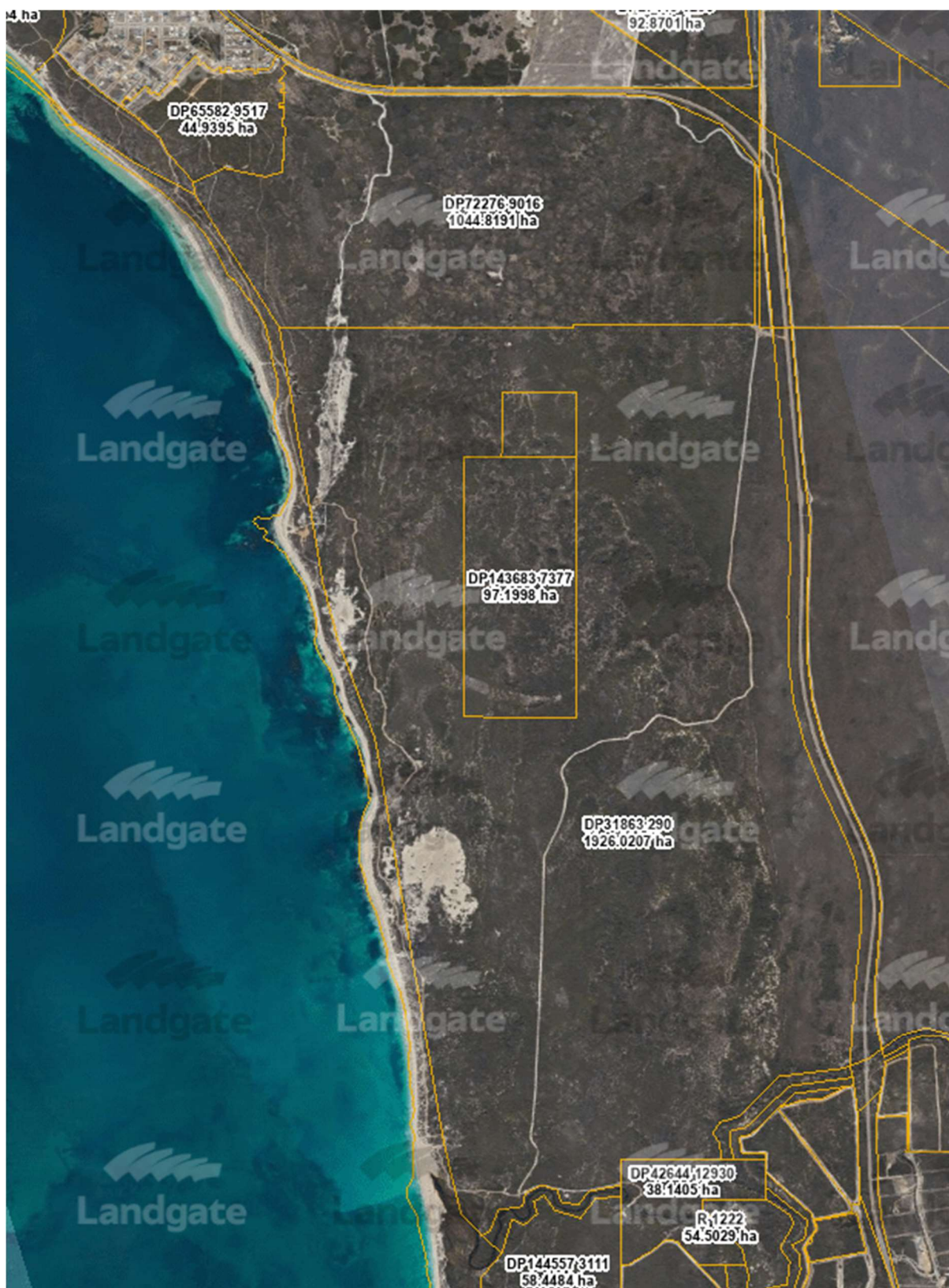
Description	Beaches within the town boundary
Access	Access is via streets that extend to the beach or tracks that access the beach.
Attractions and features	Allows boat launching and beach driving near the town
Recreational use suitability assessment	Boat launching, fishing, swimming, beach walking, dog exercise areas.
Development potential	High. Close to population. Area serviced by existing infrastructure. Requirement for segregation of pedestrian and vehicle movements.
Recommendation	<p>Site Protection (SP): Ensure access routes are suitable for high erosion risk areas. Allow for separate pedestrian and vehicle access routes.</p> <p>Site Development (SD): Signage to clearly delineate areas of use by pedestrians and vehicles. Areas of use to be mapped and available through shire websites. Clearly define beach access routes for pedestrians and vehicles. Boat launching takes place in the Marina so old town boat launching sites are obsolete.</p>

Booka Valley. (DN08)

The map displays the coastal area of Jurien Bay. Key features include:

- Coastline and Water:** The western and southern boundaries are defined by the coastline and the Indian Ocean.
- Land Parcels:** Numerous parcels are delineated by blue lines and labeled with DP numbers:
 - DP 72275, DP 72276, DP 27445, DP 26550, DP 54225, DP 31863, DP 26549, DP 36779, and DP 143683.
- Infrastructure:**
 - Jurien Bay Airport:** Located in the northern part of the bay.
 - Jurien Bay Marine Park:** Indicated by a green outline along the coast.
 - Indian Ocean Drive:** A major road running along the eastern side of the bay.
 - Road 60:** A road running along the northern shore.
- Other Labels:** The names 'Jurien Bay' and 'Jurien Bay Airport' are prominently displayed at the top.

40



Landgate Map Viewer extract of Lot Boundaries in the Booka Valley area. Coastal tracks in this area are through private property.

Description	Sandy coastal point with associated marine reef. Coastal day use recreational area.
-------------	---

Access	Can be accessed using the Jurien Bay Hill River cycle path. Access by 4WD off IOD on coastal tract through private property.
Attractions and features	Suitable for fishing, swimming, 4WD driving.
Recreational use suitability assessment	Day use area. Shade from small grove of trees. Wider flat beach section. Suitable for fishing and swimming.
Development potential	Low. Due to main access through private property. Minimal use strategy with minimal facilities.
Recommendation	<p>Site Protection (SP): Minimise vehicle access through private property. Small area that can be degraded by overuse. Low dune system on exposed high energy coast. Close off other tracks as management only tracks.</p> <p>Site Development (SD): Suited as a stopping point on the Jurien Bay to Hill River cycle path. Minimal use strategy with minimal facilities.</p>

Site Assessment

Hill River (DN09)

Location **-30.388633° 115.050800°**



Unstable coastal dunes in the Hill River area. High Energy coastline with relatively low dunes with no vegetation cover on the dune face. Vehicle and pedestrian access through the dune leaves a erosion vulnerable break in the dune structure. Good example of narrow winter beach backed by short steep dune.



Hill River Mouth. Vehicle tracks in the dune system after a long weekend give an indication of the high level of vehicle use in the area.



Looking North from Hill river Mouth. Turquoise Coast Path limits vehicle coast track development activity in this area.



Hill River Mouth looking South. Multiple tracks through narrow high erosion risk area. Tracks need to be consolidated to use a low erosion risk path through the landscape. Consider making the beach the main access path to Hill River mouth from Hill River Beach car park.



Overview of Hill River Coastal track from the Hill River Beach Car Park looking North. Multiple access and stopping points need to be closed due to the high erosion risk of the coastline in this area. The stopping points are regular used for illegal camping.



View looking South from Hill River Beach car park. Coastal track has limited beach access points and does not present a high erosion risk in the coastal dune system.

Description	Hill River mouth to Indian Ocean. Significant destination for 4WD drivers, illegal camping, fishing and local residents for recreation
Access	Access is by 4WD track or beach drive in 4WD. Numerous 4WD tracks in the area. Duplicate tracks in area need to be closed and rehabilitated. Pedestrians and cyclist can access area on the Turquoise Coast Path.

Attractions and features	Mouth of Hill River and estuary. Beach fishing location. Suitable day visit area in small groups. Seasonal bird breeding habitat for Fairy Terns. The Jurien Bay Hill River cycle path currently terminates near the eastern fringe of the estuary.
Recreational use suitability assessment	Day use only. High energy coast with low dune and sparse vegetation that provides minimal protection to coast erosion forces. Illegal camping is very prevalent at this location near the beach and on the estuary.
Development potential	Low to minimise human use impacts on fragile coastal dune system.
Recommendation	<p>Site Protection (SP): Users need to access the Hill River mouth using tracks that minimise environment damage to dune system. Improve signage, track marking. Greater presence of rangers or use of CCTV, ANPR and AI to manage user behaviour. High risk beach for 4WD driving in winter months. Rehabilitate and revegetate damaged areas.</p> <p>Site Development (SD): Clear signage on areas of use. Track making. Area delineation to protect dune system. Develop as day use area with minimum use, minimum service strategy.</p>

Site Assessment

Deflation Basin (DN10)

Location -30.443477° 115.060748°



Deflation basin North End. Area has multiple tracks that can be consolidated to reduce damage to vegetation.

Description	Small plain comprised of a narrow strip of land between the beach and the lagoon
Access	Currently by coastal track and beach. Proposed to restrict access to manage fragile landscape and scattered vegetation. Not suitable for sustained human use.
Attractions and features	Unique and fragile landscape that needs protecting.
Recreational use suitability assessment	Very low due to fragile landforms and scattered vegetation on a narrow strip of land between the beach and the lagoon. Close site to protect fragile landscape.
Development potential	Low due to fragile landforms and scattered vegetation.
Recommendation	Site Protection (SP): Use signage to restrict use of area. Use educational content to support restricted use of area. Site Development (SD): Very low due to fragile land forms and scattered vegetation on a narrow strip of land between the beach and the lagoon.

Site Assessment

Black Point (DN11)

Location 115° 3'47.99"E 30°27'20.57"S



Black Point Area looking South showing multiple tracks through area. Tracks to be consolidated through area to reduce damage to vegetation.



Black Point Area looking North showing multiple tracks through area. Tracks to be consolidated through area to reduce damage to vegetation.

Description	Limestone coastal headland with short beach and associated coastal marine reef.
Access	By 4WD only along beach or through coastal dunes on tracks. Track over and around the headland are prone to erosion and need to be managed

Attractions and features	Small headland providing shelter for recreational users. Popular fishing and illegal camping spot. The cut off drainage channels in the area are unique on the Central coast and warrant protection.
Recreational use suitability assessment	Day use area. Located near bird nesting site for Fairy Terns. Coastal marsh is located to the North of Black point and is an environmentally
Development potential	Medium. Isolated location with difficult access in winter. Located near environmentally sensitive coastal mash area. Close to bird breeding location.
Recommendation	<p>Site Protection (SP): . Minimal use strategy with minimal facilities. Close and rehabilitate high erosion risk tracks. Close access across headland close to the coast. Mark tracks to be used in the area. The cut off drainage channels in the area are unique on the Central coast and warrant protection.</p> <p>Site Development (SD): Develop as day use only area. Install visitor interpretation and usage signage.</p>

Site Assessment

Cervantes town beaches (DN12)

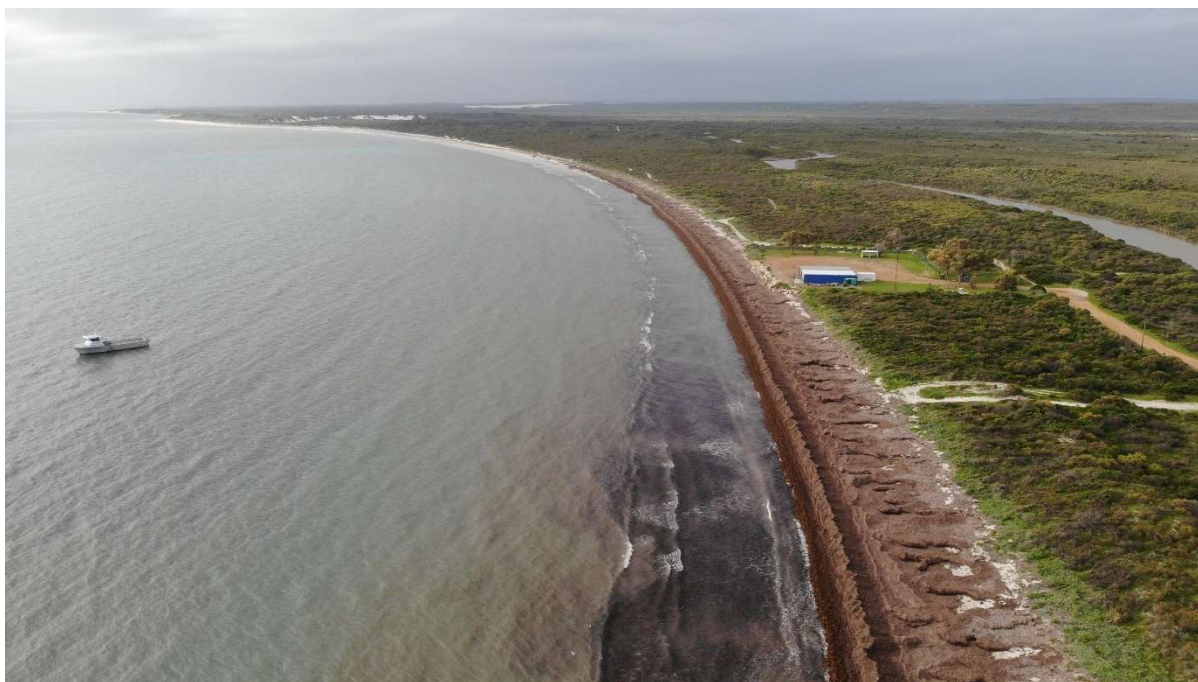
Location **-30.504724° 115.058989°**



New coastal spit developed from the eroding Thirst Point spoil. Area used by vehicles to drive on and launch boats. This prevents establishment of early dune coloniser species across the area to reestablish new dune systems to resist super tides and storm surges in the area. Spit needs clearly defined vehicle access paths to allow early colonisers to establish and help build a resilient dune structure.



Large deposit of seaweed restricting beach access for vehicles and pedestrians. Vehicle beach access point should be located past the end of typical seaweed deposit boundary. Beach access track should be managed to prevent multiple tracks branching off the main track.



Overview of typical seaweed deposit North of Cervantes that beach access point needs to allow for.

Description	Beaches within the town boundary
Access	Access is via streets that extend to the beach or tracks that access the beach.
Attractions and features	Allows boat launching and beach driving near the town
Recreational use suitability assessment	Boat launching, fishing, swimming, beach walking, dog exercise areas. Day use only.
Development potential	High. Close to population. Area serviced by existing infrastructure. Requirement for segregation of pedestrian and vehicle movements.
Recommendation	<p>Site Protection (SP): Ensure access routes are suitable for high erosion risk areas. Allow for separate pedestrian and vehicle access routes. Regenerating incipient dune area to be protected from vehicle and pedestrian use.</p> <p>Site Development (SD): Signage to clearly delineate areas of use by pedestrians and vehicles. Areas of use to be mapped and available through shire websites. Clearly define beach access routes for pedestrians and vehicles.</p>

Site Assessment

Hansen Bay (DN13)

Location **-30.523543° 115.075984°**



Picture showing the depth of seaweed deposits in the Hansen Bay area. Deposits of this depth make beaches impassable to vehicles.



Hansen Bay Southern end. Popular illegal camping location with 4WD users. Multiple tracks lead into this area. Popular fishing location.



Hansen Bay looking North West towards Thirsty Point. Area used by vehicles to drive on. This prevents establishment of early dune coloniser species across the area to reestablish new dune systems to resist super tides and storm surges in the area.

Description	Wide low beach on high energy coast
Access	Off Hansen Bay gravel road and track.
Attractions and features	Fishing, swimming, 4WD beach driving. South end of beach provides for shelter from prevailing south westerly winds
Recreational use suitability assessment	Continued use as fishing, swimming and 4WD beach driving. Site is subject to illegal camping by tourists. Day use only.
Development potential	Low. Signage on permitted beach use and access.
Recommendation	<p>Site Protection (SP): Regenerating incipient dune area to be protected from vehicle and pedestrian use. Greater presence of rangers and use of CCTV, ANPR and AI to manage user behaviour.</p> <p>Site Development (SD): Develop as day use area with minimum service minimum impact strategy. Promote tread lightly and leave no trace use of the area.</p>

Shire of Gingin Site Assessments

Site Assessment

Lancelin to Nilgen Nature Reserve Boundary. (GG01)

Location **-31.002478° 115.329696°** **-30.975370° 115.314486°**



High energy narrow beach with very soft sand. Beach is adjacent to Lancelin Off Road Vehicle (LORVA) area. Often vehicles drive on to the beach from the LORVA. Very high vehicle use on beach due to ease of access and proximity to Perth. Popular fishing access beach. Access to areas North of Lancelin via the beach can be quicker than driving on coastal tracks.



Lancelin Coast North of Off Road Vehicle Area showing numerous tracks on Crown Land and Private Property.



North End Off Road Vehicle Area looking south to Lancelin. ORV's and vehicles encroach into coastal dunes damaging vegetation that is protecting coastal landforms. Track guidance and education to be implemented to manage coastal vegetation damage.

Description	High energy coastline. Narrow beaches backed by steep dunes.
Access	Beach access or coastal track access through crown land & crown reserves. Unauthorised access through private property occurs on a regular basis as the area adjoins the Lancelin Off Road Vehicle Area. Crown land and Crown Reserve land in this area is very narrow at approximately 120m in width.

	There is also a surveyed road reserve in the area that has not been developed into a road.
Attractions and features	Proximity to Lancelin town and the Lancelin Off Road Vehicle Area make this a very popular recreational use area. Beach fishing, 4WD driving, picnicking and swimming are popular activities in this area.
Recreational use suitability assessment	High due to the close proximity to Lancelin and the Lancelin Off Road Vehicle Area. The dune system at the Lancelin Off Road Vehicle area is a mobile dune system and is constantly changing due to weather conditions. Beach is backed by high dunes. Beach is subject to benching after strong weather fronts making beach driving difficult.
Development potential	High due to proximity to Lancelin and the Lancelin Off Road Vehicle Area. It is a very popular destination for a large range of coastal based recreational activities close to Lancelin.
Recommendation	<p>Site Protection (SP): Rehabilitate and revegetate disturbed areas. Consolidate tracks where possible.</p> <p>Site Development (SD): Delineate pedestrian and vehicle movements. Educational signage on use of the area. Define limits of Crown Land and Reserves.</p>

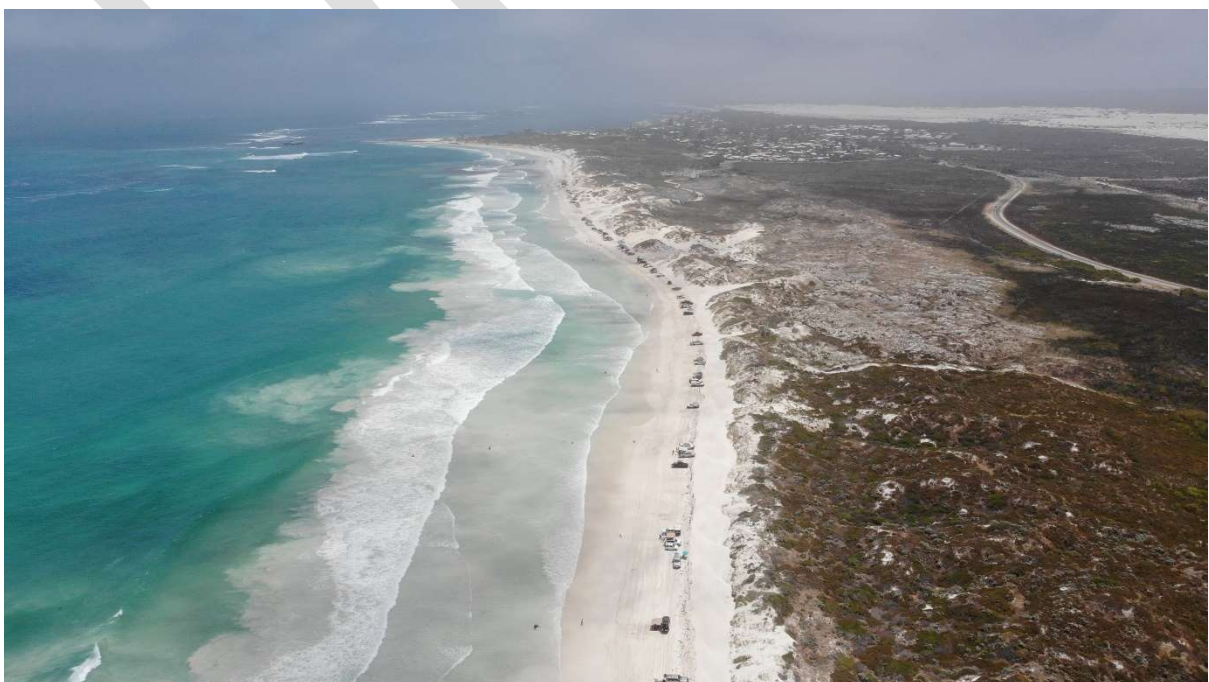
Site Assessment

Lancelin Back Beach (GG02)

Location **-31.036521° 115.337418°**



High energy beach with constantly changing beach profile. Sand bench is clearly visible in the picture. Vehicle users drive onto the beach and through dune system with little regard to vegetation and erosion risks. Beach is used as access track to areas South of Lancelin.



Lancelin Back Beach holiday recreational vehicle activity.

Description	High energy coastline. Narrow sandy beach. Beach shortens up and prone to benching in winter and storms. Beach in summer is flatter and more open.
Access	Coastal track through dunes from carpark
Attractions and features	Good sandy beach with ocean swell making it a good surfing beach. Popular in summer time for beach picnicking and swimming. Used by 4WD for beach driving to the South of Lancelin to Ledge Point.
Recreational use suitability assessment	High recreational use value with close access to Lancelin. Beach is in regularly use by a broad spectrum of recreational users. Users often drive into dune system and camp in dune system in contravention of the area of use signage.
Development potential	High with delineation of pedestrians and vehicles. Beach is in use most of the year with a range of recreational user groups. Beach is subject to winter degradation and summer accumulation. Beach can bench and become hazardous to vehicle users.
Recommendation	<p>Site Protection (SP): Rehabilitation of dune near beach entrance, exclude vehicles from dune system.</p> <p>Site Development (SD): Delineation of pedestrians and vehicles. Educational signage on use of area.</p>

Site Assessment

Fence Reef to Lancelin (GG03)

Location -31.063513° 115.348472° -31.034299° 115.335557°



Typical beach profile south of Lancelin. Interspersed with limestone headlands that are bypassed by using coastal tracks. Mining leases are located near coastal tracks and users often enter active mining leases even when they are signed posted as Do Not Enter.



Looking South toward Fence Reef. Coastal dunes natural form retained by limited access from land side to the coast.



Looking North toward Fence Reef. Coastal track development through dunes and mining leases. Track marking through this area would reduce track multiplication.

Description	High energy coastline. Narrow beaches backed by steep dunes
Access	Beach access or coastal track access through mining leases, crown land & crown reserves.
Attractions and features	4WD track to fishing locations, beaches and picnic spots. Very popular area for surfing with easy access. Relatively easy access to beach and close to town makes this beach very popular with locals and tourist.
Recreational use suitability assessment	High due to ease of access and proximity to Lancelin town. Area is suitable for a range of recreational activities. Beach is backed by high dunes. Beach is subject to benching after strong weather fronts making beach driving difficult. Mining Leases close to coast and 4WD users regularly enter mining leases without permission.
Development potential	High as it is a very popular destination for a large range of coastal based recreational activities close to Lancelin.
Recommendation	<p>Site Protection (SP): Rehabilitate and revegetate disturbed areas. Consolidate tracks where possible.</p> <p>Site Development (SD): Delineate pedestrian and vehicle movements. Educational signage on use of the area. Define the limit of the Crown Land and Reserve.</p>

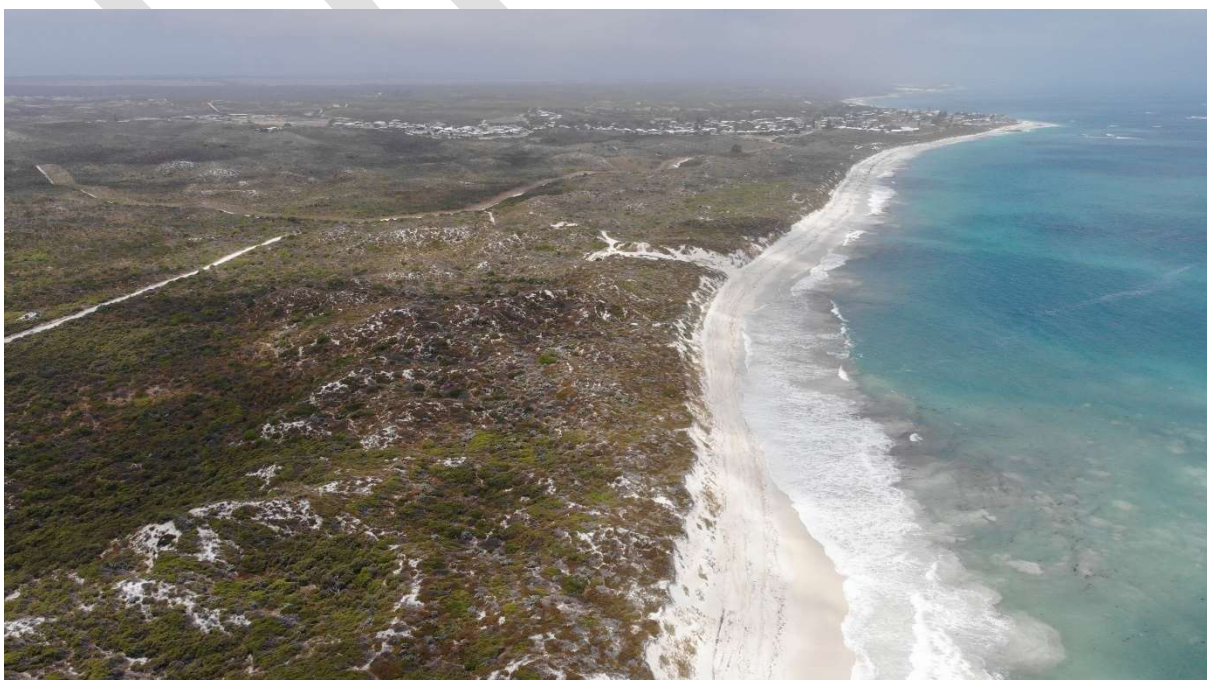
Site Assessment

Ledge Point to Fence Reef (GG04)

Location -31.104226° 115.374141° -31.063513° 115.348472°



Looking North from Ledge Point Groyne. Area where seaweed builds up close to Ledge Point. Further North the beaches tend not to have large seaweed build ups. The Coastal track between Ledge Point and Lancelin is often used as an alternative Lancelin access road.



Ledge Point North looking South to Ledge Point. Very steep foredune restricts coastal access in this area. Best access points need to be marked and other points closed off.

Description	High energy coastline. Narrow beaches backed by steep dunes
Access	Beach access or coastal track access through crown land & crown reserves.
Attractions and features	4WD track to fishing locations, beaches and picnic spots.
Recreational use suitability assessment	High as distance between Ledge Point and Lancelin is 10km in a straight line measure. Access is via the beach and coastal tracks. Popular with locals and visitors due to ease of access from Ledge Point and Lancelin. Beaches can be soft and subject to shelf formation after storms or weather fronts. Seaweed build up can be high at times subject to weather conditions. There are active mine sites along the tracks. Some service tracks in the area assist in local access. Mines safety regulations prohibited unauthorised entry onto mine sites.
Development potential	High due to ease of access from Ledge Point and Lancelin town sites. Beach access along the coast is facilitated by a number of tracks and local access roads to services and mines. Weed build up on the beach can be high after weather storms or weather fronts.
Recommendation	<p>Site Protection (SP): Rehabilitate and revegetate disturbed areas. Consolidate tracks where possible.</p> <p>Site Development (SD): Delineate pedestrian and vehicle movements. Educational signage on use of the area. Define the limit of the Crown Land and Reserve.</p>

Site Assessment

Manakoora Sand Patch to Ledge Point (GG05)

Location -31.151085° 115.393183° -31.109985° 115.377500°



Typical coastal track around the Mankoorra Sand Patch area. If the track becomes impassable 4WD user will make a new branch track to be able to drive over the dune.



South Ledge Point looking North toward Ledge Point. Multiple tracks in the area that need to be reduced to reduce vegetation damage in the area and protect coastal dunes.



South Ledge Point looking South to Manakoora Sand Patch. Coastal track growth limited in the area by steep coastal dunes and reasonable good trafficable beach.

Description	High energy coastline. Narrow beaches backed by steep dunes or limestone cliffs and head lands
Access	Beach access or coastal track access through crown reserves or private property.
Attractions and features	4WD track to fishing locations, beaches and picnic spots. A number of coastal shacks along the coast in this area.

Recreational use suitability assessment	Low due to private property being close to coastline. Current coastal tracks traverse private property in sections. Access using crown land is via the beach and a 130-400m wide corridor following the coastline. Manakoora Sand Patch is an active mine site. Mines safety regulations prohibited unauthorised entry onto mine sites
Development potential	Low. Beach access is along a narrow beach on a high energy coastline backed by steep sand dunes and limestone headlands. Coastal tracks traverse crown reserves or private property.
Recommendation	<p>Site Protection (SP): Rehabilitate and revegetate disturbed areas. Consolidate tracks where possible.</p> <p>Site Development (SD): Develop as day use area with minimum service minimum impact strategy. Promote tread lightly and leave no trace use of the area. Define the limit of the Crown Land and Reserve.</p>

Site Assessment

Breton Bay to Manakoora Sand Patch (GG06)

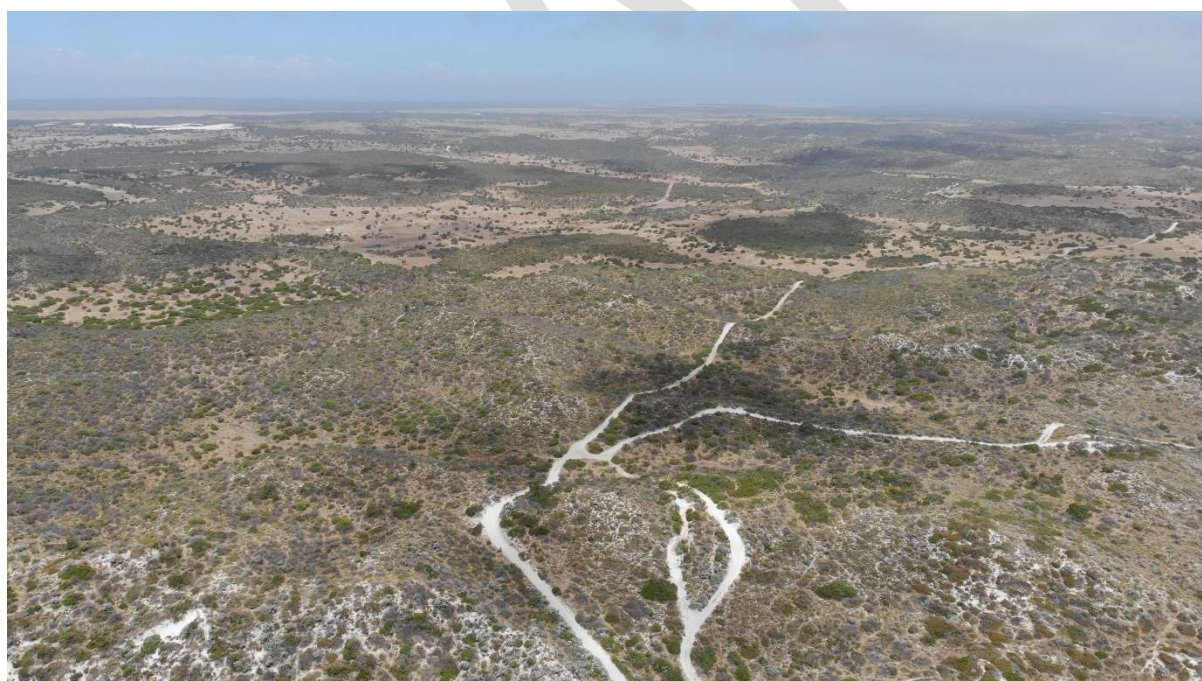
Location -31.199444° 115.410386° -31.151085° 115.393183°



Looking South from Manakoora Sand Patch toward Breton Bay. Multiple tracks and beach entry point in the area. Track marking will reduce tracks and beach entry points to allow natural process to stabilise sand dunes in the area.



Tracks South of Manakoora Sand Patch before turning inland into private property to access Breton Bay and Indian Ocean Drive



Inland Tracks to Breton Bay and Indian Ocean Drive through private property. Some coastal track users ignore landowner signs and gates restricting access to private property.

Description	High energy coastline. Narrow beaches backed by steep dunes or limestone cliffs and head lands
Access	Beach access or coastal track access through private property.
Attractions and features	4WD track to fishing locations, beaches and picnic spots. A number of coastal shacks along the coast in this area.

Recreational use suitability assessment	Low due to private property being close to coastline. Current coastal tracks traverse private property. Limestone head land bypass track also traverse private property. Access using crown land is via the beach and a 130-400m wide corridor following the coastline. Manakoora Sand Patch is an active mine site. Mines safety regulations prohibited unauthorised entry onto mine sites. Define the limit of the Crown Land and Reserve.
Development potential	Low. Beach access is along a narrow beach on a high energy coastline backed by steep sand dunes and limestone headlands. Coastal tracks traverse private property.
Recommendation	<p>Site Protection (SP): Rehabilitate and revegetate disturbed areas. Consolidate tracks where possible.</p> <p>Site Development (SD): Develop as day use area with minimum service minimum impact strategy. Promote tread lightly and leave no trace use of the area. Define the limit of the Crown Land and Reserve.</p>

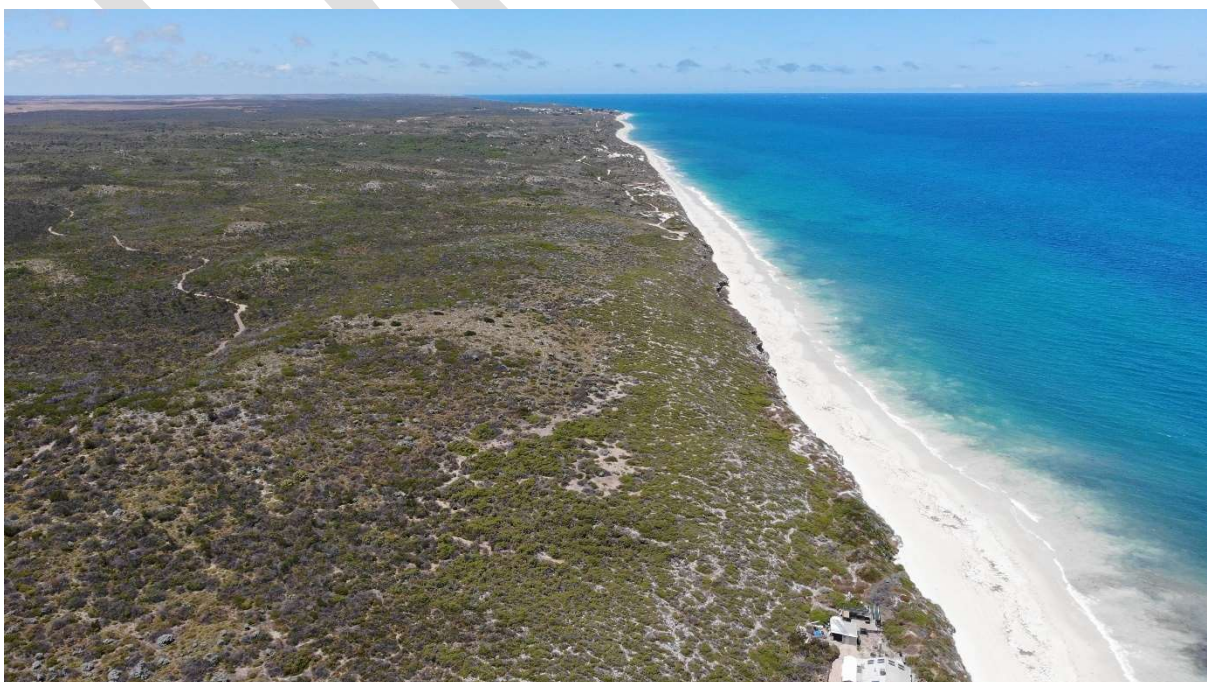
Site Assessment

Mission Beach/Eagles Nest Bluff to Breton Bay (GG07)

Location -31.228589° 115.424592° -31.199444° 115.410386°



Looking North from Mission Beach area. Narrow Beaches with limestone headlands and steep dunes and limestone cliffs backing the beach. Coastal tracks are sandy with areas of limestone bedrock sections. Beach entry/exit points are very limited.



Looking South from Eagles Nest Bluff to Mission Beach (Rail Carriages). Beach access constrained by limestone cliffs and very steep beach entry points. Inland tracks encroaches on private property.



Looking North from Eagles Nest Bluff toward Breton Bay. Inland track location is historically developed. Track encroaches on private property in sections. Beach access constrained by limestone cliffs and very steep beach entry points.



Looking South from Breton Bay toward Eagles Nest Bluff. Track encroaches on private property through this area. Beach access South of here is limited by limestone cliffs and very steep beach entry points.



Breton Bay looking North towards Manakoora Sand Patch. Beach access limited by steep coastal dunes. Beach travel determined by tides, limestone headlands and beach sand conditions. Access from the East is through private property. Track users often ignore No Entry to Private Property signs and gates. These are regularly vandalised.



Breton Bay East access through private property. Coastal track users often ignore No Entry to Private Property signs and gates. These are regularly vandalised.

Description	High energy coastline. Narrow beaches backed by steep dunes or limestone cliffs and head lands
Access	Beach access or coastal track access through private property.
Attractions and features	4WD track to fishing locations, beaches and picnic spots. A number of coastal shacks along the coast in this area.

Recreational use suitability assessment	Low due to private property being close to coastline. Current coastal tracks traverse private property. Limestone head land bypass track also traverse private property. Access using crown land is via the beach and a 130m wide corridor following the coastline.
Development potential	Low. Beach access is along a narrow beach on a high energy coastline backed by steep sand dunes and limestone headlands. Coastal tracks traverse private property.
Recommendation	<p>Site Protection (SP): Rehabilitate and revegetate disturbed areas. Consolidate tracks where possible.</p> <p>Site Development (SD): Develop as day use area with minimum service minimum impact strategy. Promote tread lightly and leave no trace use of the area. Define the limit of the Crown Land and Reserve.</p>

Site Assessment

Seabird to Mission Beach/Eagles Nest Bluff (GG08)

Location -31.269104° 115.440768° -31.228589° 115.424592°



Sea Bird Beach entry point looking North. Dual use area as pedestrians and vehicles are not separated on beach. Limited options on this beach to separate pedestrians and vehicles.



Looking North toward Mission Beach. Beach entry track into prevailing wind resulting in high energy erosion point on coast.



Seabird Town Beaches



Coastal Tracks North from Seabird. Track marking required to reduce multiple tracks and beach entry points in the area.



Looking South from Mission Beach area towards Seabird. Steep coastal dunes limit beach entry point through this area. Dunes system structure has also limited track growth.



Mission Beach looking North towards Eagles Nest Bluff. Track development and vegetation damage surrounding old rail carriage squatters' settlement. Area of use around rail carriages to be defined by barrier system to limit vegetation damage in the area.



Looking South East from Mission Beach area. Track on the left of picture is access through private property. Track on the right of picture is Coastal access track from Seabird.

Description	High energy coastline. Narrow beaches backed by steep dunes or limestone cliffs and head lands
Access	Seabird town site North using coastal tracks.
Attractions and features	4WD track to fishing locations, beaches and picnic spots. A number of coastal shacks along the coast in this area.
Recreational use suitability assessment	Low due to private property being close to coastline. Current coastal tracks traverse private property. Limestone head land bypass track also traverse

	private property. Access using crown land is via the beach and a 170meter wide corridor following the coastline.
Development potential	Low. Beach access is along a narrow beach on a high energy coastline backed by steep sand dunes and limestone headlands. Coastal tracks traverse private property.
Recommendation	Site Protection (SP): Rehabilitate and revegetate disturbed areas. Consolidate tracks where possible. Restrict track growth in the area. Site Development (SD) Develop as day use area with minimum service minimum impact strategy. Promote tread lightly and leave no trace use of the area. Define the limit of the Crown Land and Reserve.

DRAFT

Site Assessment

Guilderton to Seabird (GG09)

Location -31.339615, 115.491433 -31.279593, 115.443496



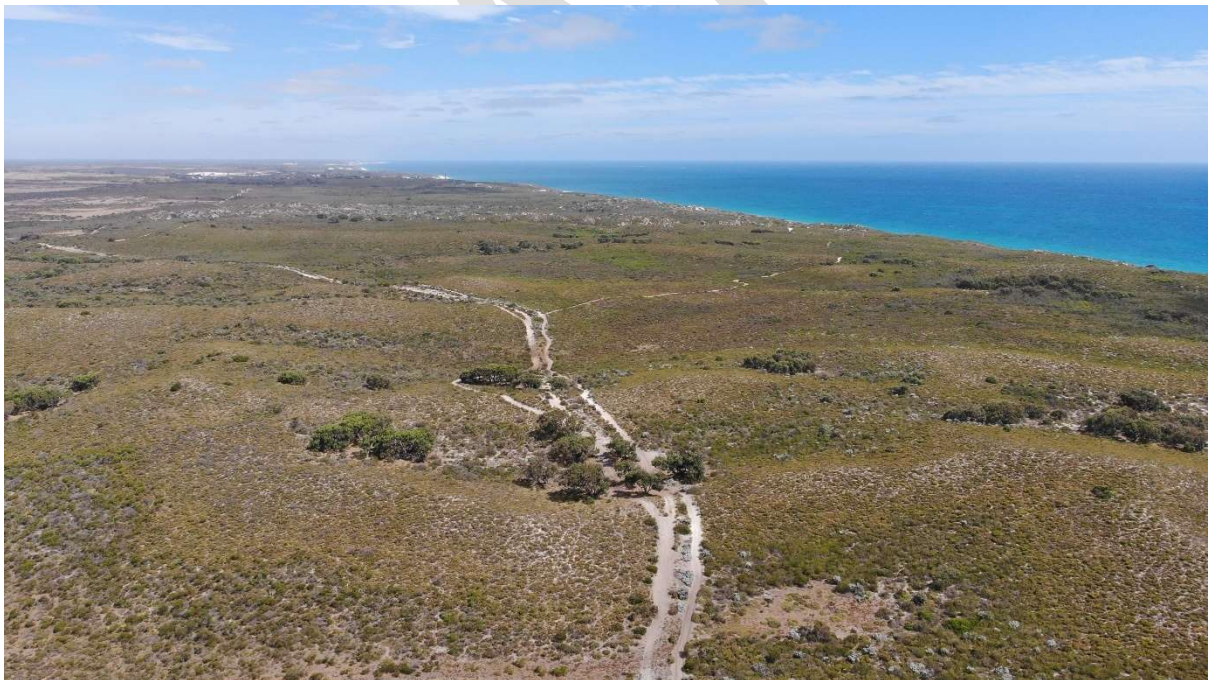
Guilderton Beach looking North. Limestone headlands and tides limit beach travel. Beach is narrow and backed by steep dunes with limited entry/exit points



Tracks from Guilderton town into coastal dunes North of town near the Guilderton Lighthouse.



Network of tracks North of Guilderton Lighthouse leading to Seabird to the North. Opportunities to define a main track through landscape to allow vegetation to rehabilitate the area.



Inland Coastal tracks Leading to Guilderton Lighthouse and coast. Track marking will reduce track multiplication in the area.



View of inland tracks looking North West to Seabird. Track marking will reduce track multiplication in the area.



Tracks North of the Seabird coastal navigation beacon. This is near the North junction of the coastal track and the inland track. There are both management and recreational tracks through this area. Track marking will reduce track multiplication through the area.



Looking South at coastal tracks South of Seabird. There are both management and recreational tracks through this area. Track marking will reduce track multiplication through the area.

Description	High energy coastline. Narrow beaches backed by steep dunes or limestone cliffs and head lands
Access	From either Guilderton or Seabird townsites onto coastal tracks
Attractions and features	4WD track to fishing locations, beaches and picnic spots.
Recreational use suitability assessment	Low recreational use suitability due to private property boundaries being close to the coast. Current tracks are not public rights of way and may cross private property boundaries. Difficult to access for emergency services. Shallow limestone in the area is easily exposed and causes significant track widening at these locations.
Development potential	Low due to private property being close to the coast. Steep beach entry points and narrow beaches with limestone embayment's restricting beach driving experiences.
Recommendation	<p>Site Protection (SP): Rehabilitate and revegetate disturbed areas. Minimise track growth in the area.</p> <p>Site Development (SD): Delineate pedestrian and vehicle movements. Educational signage on use of the area. Develop as day use area with minimum service minimum impact strategy. Promote tread lightly and leave no trace use of the area. Define the limit of the Crown Land and Reserve.</p>

Site Assessment

Wilbinga to Moore River mouth (GG10)

Location **-31.403156° 115.535956°** **-31.359269° 115.501590°**



Moore River Mouth. Coastal track users travel North from Wilbinga along the beach to access the Guilderton South Bank Dunes.



Coastal tracks from the beach east into the Guilderton South Dunes. Sand boarding on the Guilderton South Dunes is popular recreational activity. Sand boarders use 4WD to access the dunes and to stay in the area.

Description	High energy sandy beach backed by steep dunes at base of beach.
Access	Through Wilbinga Conservation reserve.

Attractions and features	Access toward Moore River along beach. Popular with 4WD and fishermen. Beach conditions can vary seasonally and be hazardous to drive on especially after winter storms.
Recreational use suitability assessment	High recreation use value. This is offset by the varied and hazardous nature of the changing beach conditions and difficult access to the beach through Wilbinga Nature Reserve.
Development potential	Low. The area is accessed by tracks with a high degree of difficulty through the Wilbinga Conservation Reserve. The area is a very long narrow strip of beach backed with steep dunes backed by private property. There are ongoing issues of 4WD users entering the private property adjoining the beach and Wilbinga Conservation Reserve.
Recommendation	<p>Site Protection (SP): Exclude vehicles from dune system on the South bank of the Moore River. Rehabilitate and revegetate disturbed areas. Close down vehicles access to south bank of Moore River at Guilderton from the beach.</p> <p>Site Development (SD): Delineate pedestrian and vehicle movements. Educational signage on use of the area. Define the limit of the Crown Land and Reserve.</p>

Map Index

Coorow Map 1-9

Coorow Map 1

Coorow Map 2

Coorow Map 3

Coorow Map 4

Coorow Map 5

Coorow Map 6

Coorow Map 7

Coorow Map 8

Coorow Map 9

Dandaragan Map 1-11

Dandaragan Map 1

Dandaragan Map 2

Dandaragan Map 3

Dandaragan Map 4

Dandaragan Map 5

Dandaragan Map 6

Dandaragan Map 7

Dandaragan Map 8

Dandaragan Map 9

Dandaragan Map 10

Dandaragan Map 11

Gingin Map 1-6

Gingin Map 1

Gingin Map 2

Gingin Map 3

Site Index

CW 1 – CW 9

CW1 Leeman South

CW 2 Webb Island, CW 3 Little Anchorage Bay

CW 3 Little Anchorage Bay, CW 4 Lipfert Island

CW 5 Billy Goat Bay/Milligan Island, CW 6 Harrop Inlet, CW 7 Point Louise, CW 8 Anchorage Bay

CW 8 Anchorage Bay, CW 9 South Bay

CW 9 South Bay

CW 9 South Bay

CW 9 South Bay

CW 9 South Bay

DN 1 – DN 13

DN 1 Giswald Bay, DN 2 Sandy Cape

DN 2 Sandy Cape

DN 3 Kingy Bay, DN 4 Sandland Island/Volcano

DN 5 North Head, DN 6 Pumpkin Hollow

DN 6 Pumpkin Hollow

DN 7 Jurien Bay Town Beaches

DN 7 Jurien Bay Town Beaches, DN 8 Booka Valley

DN 9 Hill River

DN 10 Deflation Basin

DN 11 Black Point

DN 12 Cervantes Beaches, DN 13 Hansen Bay

GG 1-6

GG 1 Lancelin to Nilgen Reserve Boundary

GG 3 Fence Reef to Lancelin South, GG 4 Ledge Point to Fence Reef

GG 5 Manakoora Sand Patch to Ledge Point, GG 6 Breton Bay to Manakoora SandPatch

Gingin Map 4	GG 7 Mission Beach/Eagles Nest Bluff to Bretton Bay, GG 8 Seabird to Mission Beach/Eagles Nest Bluff
Gingin Map 5	GG 8 Seabird to Mission Beach/Eagles Nest Bluff, GG 9 Guilderton to Seabird
Gingin Map 6	GG 9 Guilderton to Seabird

DRAFT

Protect Our Coast Sign locations using What 3 Words

Locations List by Local Government Authority.

Shire of Coorow

Leeman South Limestone shelf and beaches (CW01)	///fished.curtain.jumbled, ///subbed.radiated.installing,
Webb Island area (CW02)	///sunburns.suppressed.vent,
Little Anchorage Bay (CW03)	///refreshing.node.affirm, ///bookcase.incensed.acting
Lipfert Island area. (CW04)	///pathfinder.strikeout.flagged
Billy Goat Bay (Milligan Island area) (CW05)	///milk.bogus.tearing, ///cutely.kidding.disposable
Harrop Inlet (CW06)	
Pont Louise (CW07)	///biologist.cynically.desired
Anchorage Bay (CW08)	///misfortune.turtle.scoops,
South Bay (CW09)	///hefty.outlet.radioactive, ///mottos.anchoring.desk, ///fearful.busies.botch, ///smart.discuss.payroll

Shire of Dandaragan

Griswald Bay (DN01)	
Sandy Cape (DN02)	///easing.mistreated.question, ///reforming.downwards.grazed, ///computers.appetite.hither
King Bay (DN03)	
Volcano (DN04)	
North Head (DN05)	
Pumpkin Hollow (DN06)	
Jurien Bay town beaches (DN07)	///lander.bookstore.pulps
Booka Valley. (DN08)	///gratitude.listens.ballet
Hill River (DN09)	///chances.cookies.thanking
Deflation Basin (DN10)	
Black Point (DN11)	
Cervantes town beaches (DN12)	///healer.proms.bricks, ///swelled.errand.scarily, ///somebody.woodstove.convening

Hansen Bay (DN13)

///joyous.ecologists.pertaining

Shire of Gingin

Lancelin to Nilgen Nature Reserve Boundary. (GG01)

///benefactor.circulated.influence,

Lancelin Back Beach (GG02)

///flirting.sounds.threadbare

Fence Reef to Lancelin (GG03)

///notably.decorators ushering

Ledge Point to Fence Reef (GG04)

///pearls.mentor.toils,

///strikeout.dunks.naptime

Manakoora Sand Patch to Ledge Point (GG05)

///ventilation.vivid.gymnastic

Breton Bay to Manakoora Sand Patch (GG06)

Mission Beach/Eagles Nest Bluff to Breton Bay (GG07)

Seabird to Mission Beach/Eagles Nest Bluff (GG08)

///glorious.relying.tally

Guilderton to Seabird (GG09)

///theatrical.truthfully.line,

///encircling.cashes.cheerful,

///grated.deodorant.mistreat

Wilbinga to Moore River mouth (GG10)