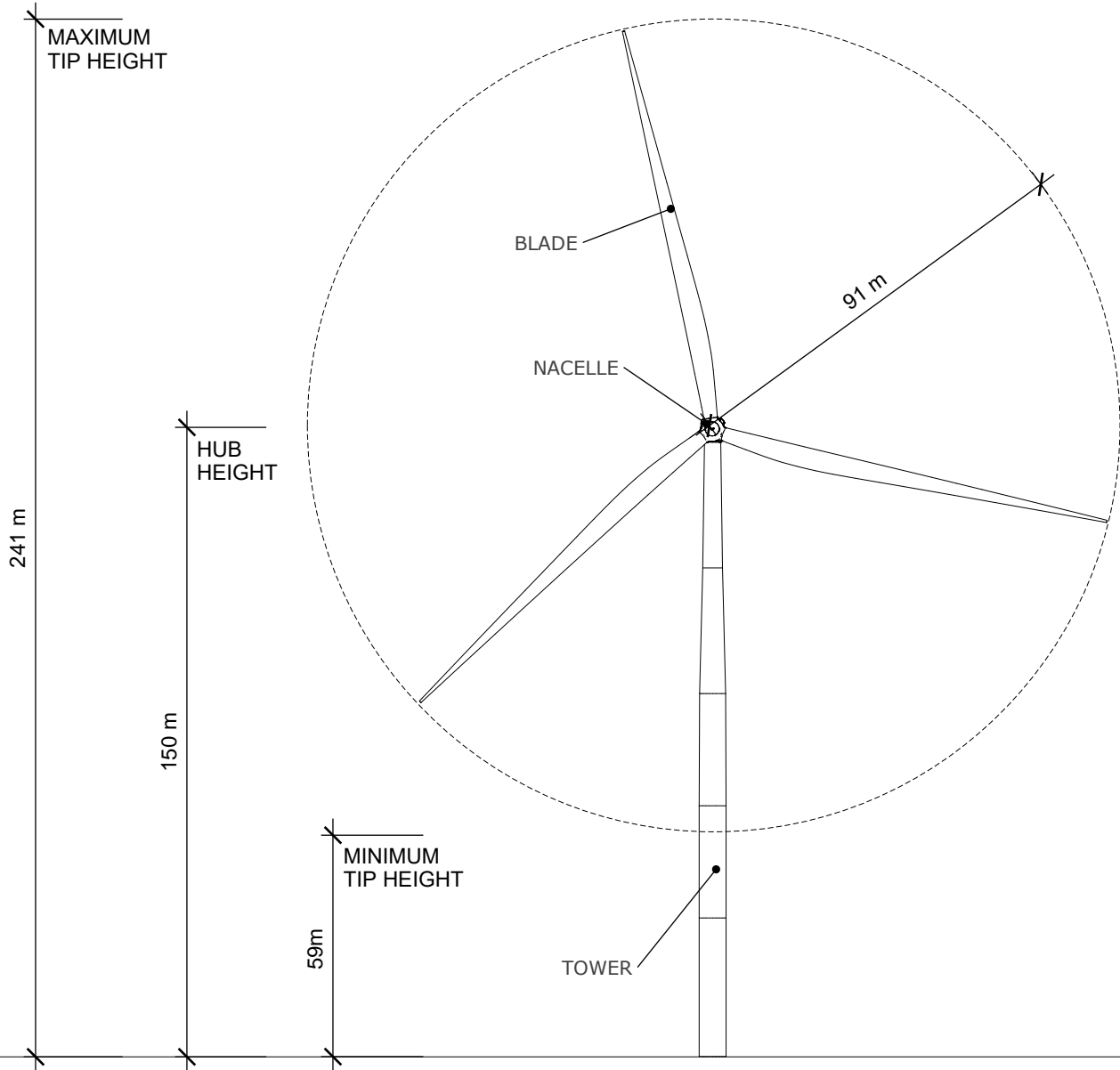


TYPICAL
170M HUB HEIGHT
TOWER



TYPICAL
150M HUB HEIGHT
TOWER

DRAWING TITLE
Wind Turbine (Typical)-
Elevations

PROJECT
Yathroo Wind Farm

PROJECT NO.
YTO

DRAWN BY
RJW

APPROVED BY
RJW

ISSUE
4.07.25

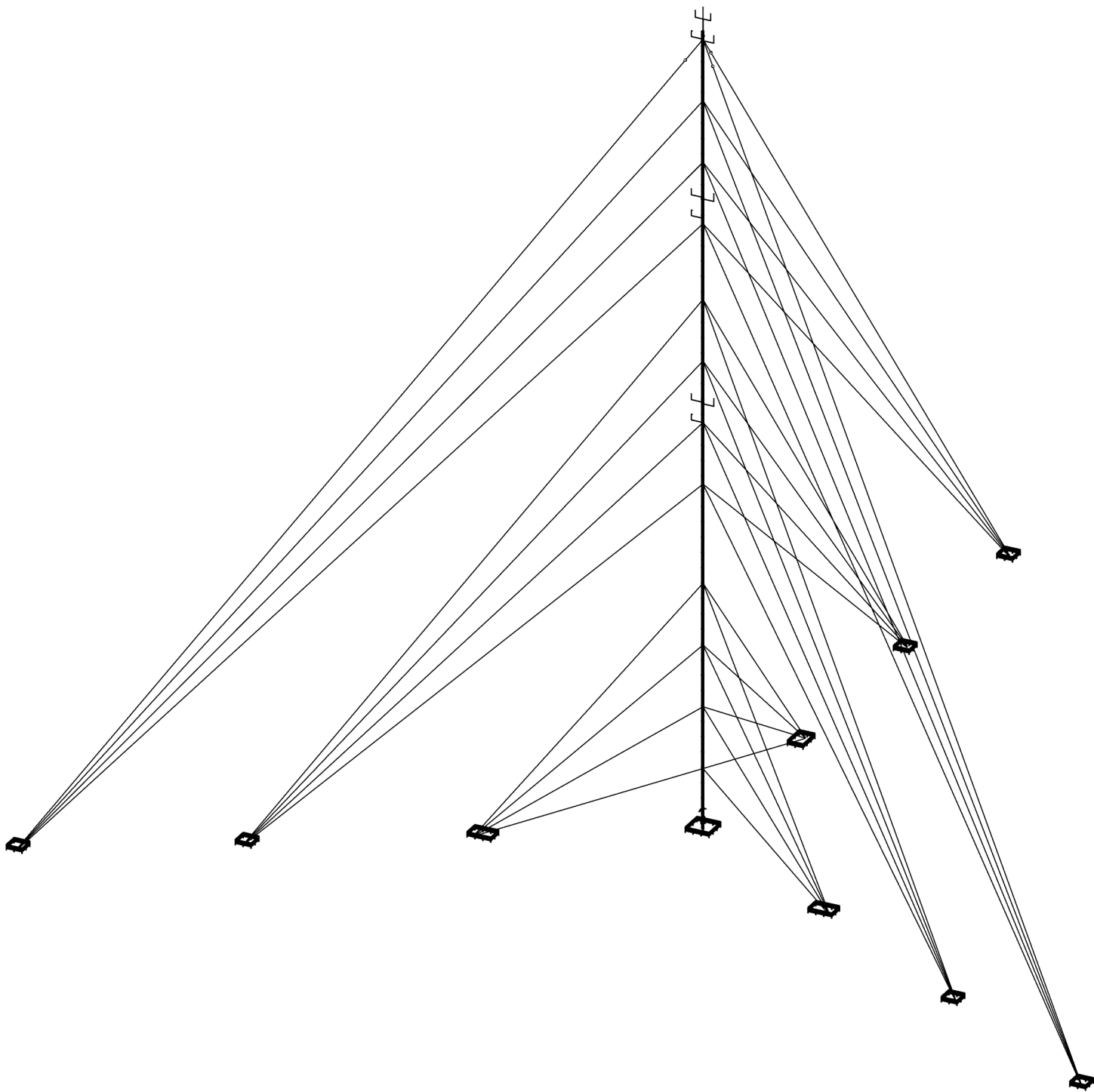
REVISION
B

NEOEN

NOTES
1. THIS DRAWING IS FOR PLANNING PURPOSES AND IS NOT FOR CONSTRUCTION.
2. FINAL ARRANGEMENT IS SUBJECT TO SUPPLIER SELECTION, WITH ALL TURBINES
BEING IDENTICAL IN SIZE AND MODEL.
3. THIS DRAWING HAS BEEN PREPARED WITH THE HIGHEST DEGREE OF ACCRUACY
POSSIBLE. HOWEVER NEOEN, NOR ANY OF ITS CONTRACTORS/SUPPLIERS CAN BE
HELD RESPONSIBLE FOR ANY DAMAGES DUE TO ERRORS OR EMISSIONS.

YTO-WF-DR-1001

4.07.25 | **Rev. B**



DRAWING TITLE
Wind farm met mast -
Isometric

PROJECT
Yathroo Wind Farm

PROJECT NO.
YTO

DRAWN BY
RJW

APPROVED BY
RJW

ISSUE
4.07.25

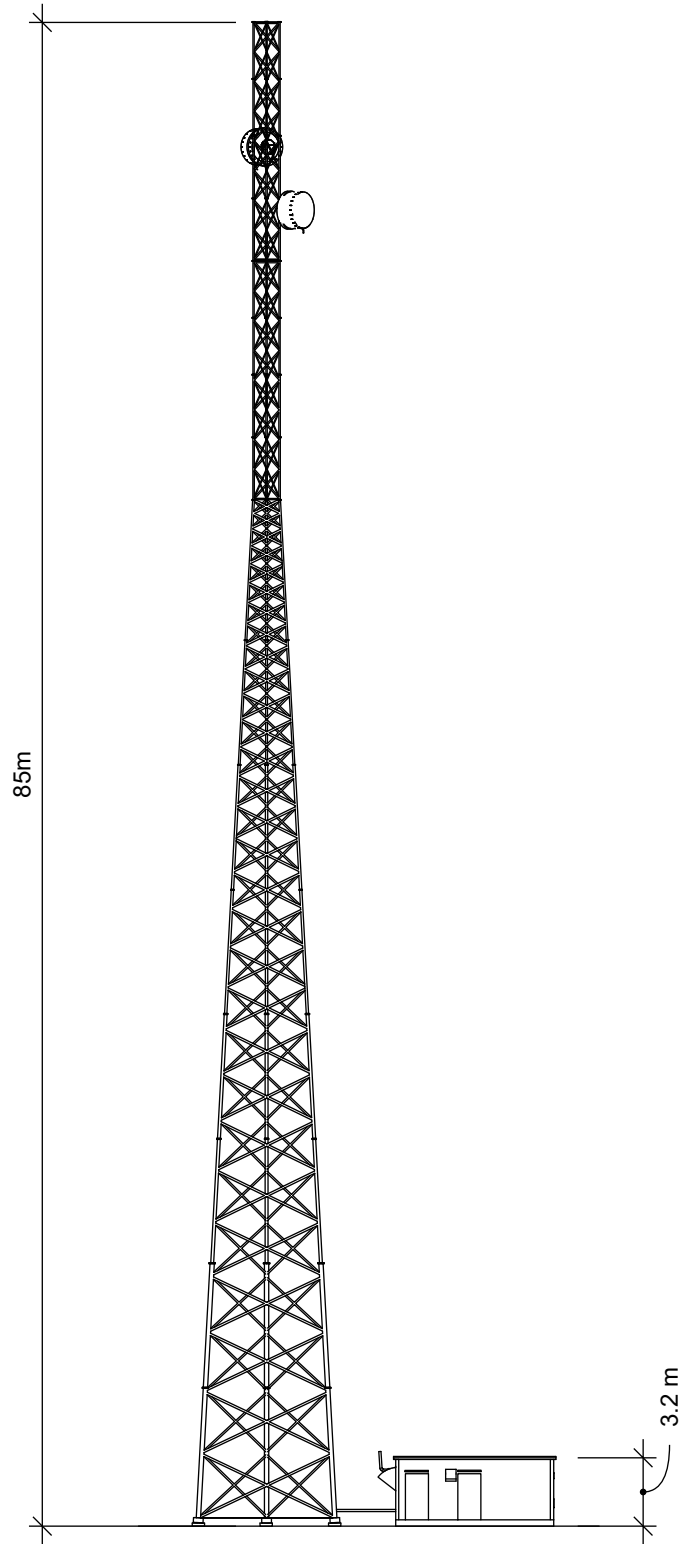
REVISION
B

NEOEN

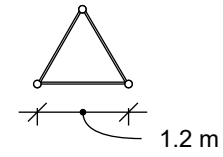
NOTES
1. THIS DRAWING IS FOR PLANNING PURPOSES AND IS NOT FOR CONSTRUCTION.
2. FINAL ARRANGEMENT IS SUBJECT TO DETAIL DESIGN.
3. THIS DRAWING HAS BEEN PREPARED WITH THE HIGHEST DEGREE OF ACCRUACY
POSSIBLE. HOWEVER NEOEN, NOR ANY OF ITS CONTRACTORS/SUPPLIERS CAN BE
HELD RESPONSIBLE FOR ANY DAMAGES DUE TO ERRORS OR EMISSIONS.

YTO-**WF-DR-1201**

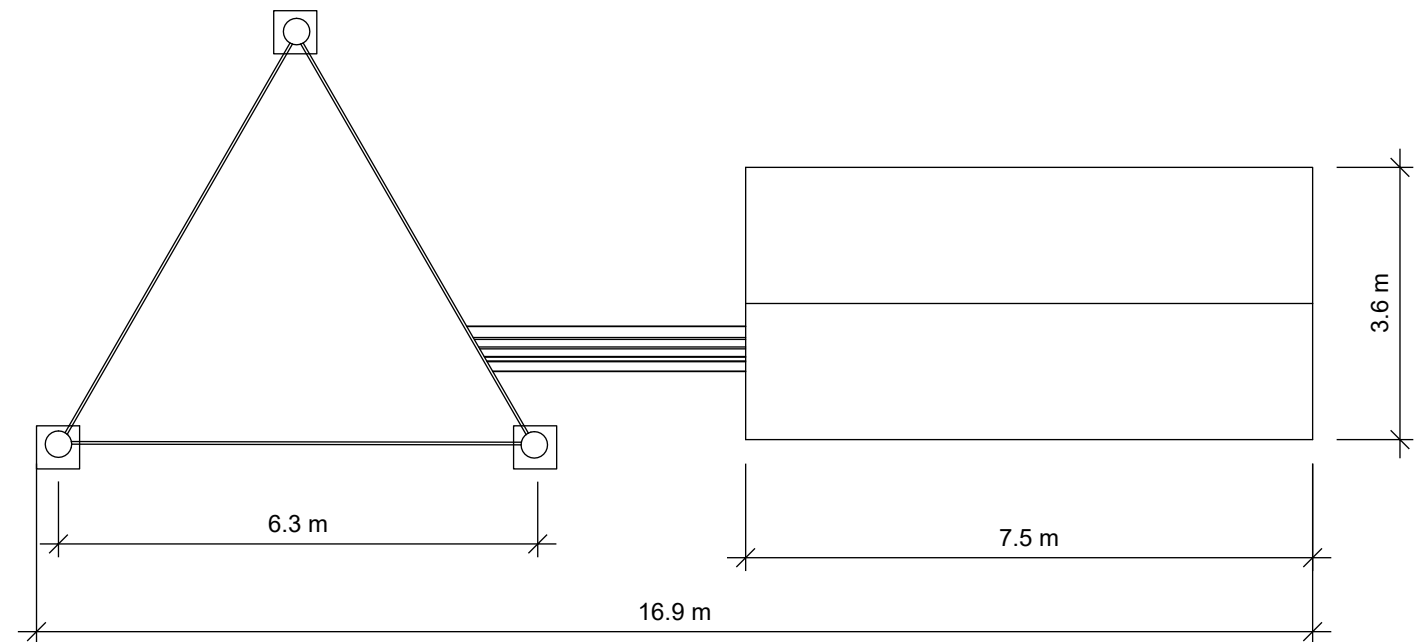
4.07.25 | Rev. B



A Plan - Top
1201 Scale: 1:100



B Plan - Base
1201 Scale: 1:100



DRAWING TITLE
Wind farm communication
tower - Section and plan

PROJECT
Yathroo Wind Farm

PROJECT NO.
YAT

DRAWN BY
RJW

APPROVED BY
RJW

ISSUE
04.07.25

REVISION
B

NEOEN

NOTES
1. THIS DRAWING IS FOR PLANNING PURPOSES AND IS NOT FOR CONSTRUCTION.
2. FINAL ARRANGEMENT IS SUBJECT TO DETAIL DESIGN.
3. THIS DRAWING HAS BEEN PREPARED WITH THE HIGHEST DEGREE OF ACCRUACY
POSSIBLE. HOWEVER NEOEN, NOR ANY OF ITS CONTRACTORS/SUPPLIERS CAN BE
HELD RESPONSIBLE FOR ANY DAMAGES DUE TO ERRORS OR EMISSIONS.

YAT-WF-DR-1201
04.07.25 | Rev. B